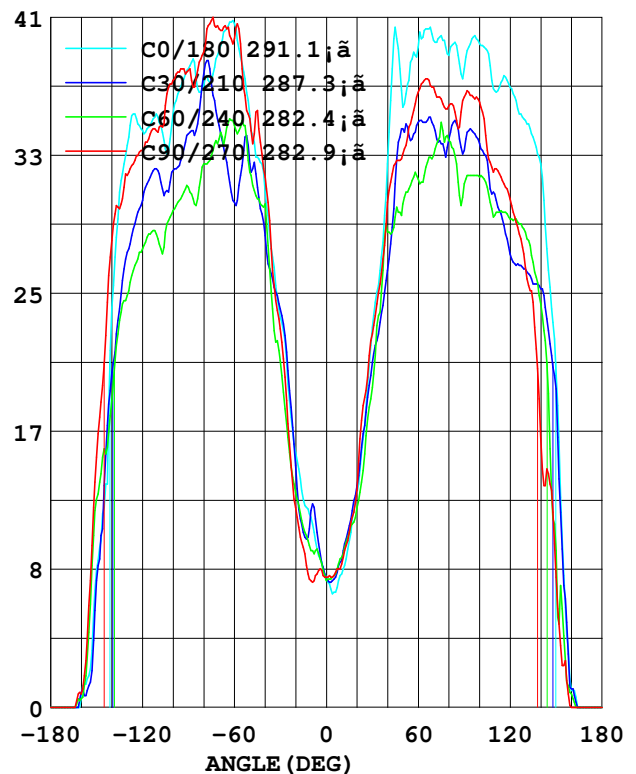
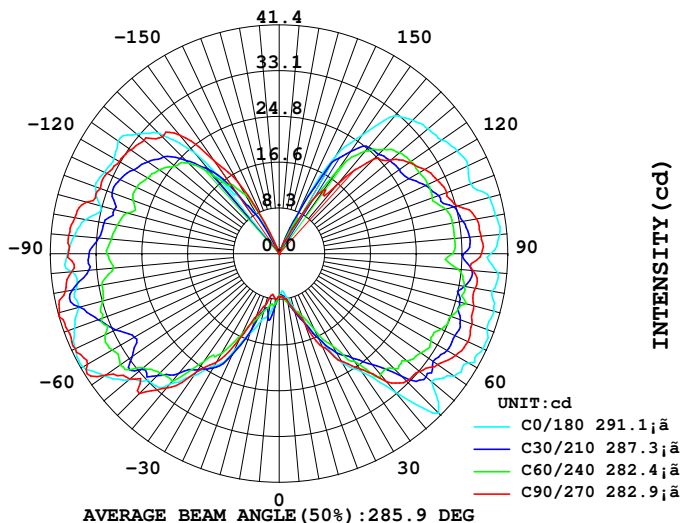


LUMINAIRE PHOTOMETRIC TEST REPORT

Report number: GO2018 - 324

MANUFACTURER: IDEAL LUX SRL	Address: Via Taglio Destro 32 - Mirano (VE)	
NAME: 201269 LAMPADINA DIAMOND	TYPE: LIGHTBULP	WEIGHT:
SPECIFICATION:	DIMENSION: D120	SERIAL No.:

DATA OF LAMP		Imax (cd)	45.10	S/MH (C0/180)	3.61
MODEL	201269 LAMPADINA DIAMOND	EFFICIENCY (%)	100.0	S/MH (C90/270)	3.63
NOMINAL POWER (W)	4	TOTAL FLUX (lm)	357.35	Voltage (V)	229.1
RATED VOLTAGE (V)	230	EFFICIENCY (lm/W)	85.1	Current (A)	0.037
NOMINAL FLUX (lm)	357.3	η up (%)	45.3	Power (W)	4.200
LAMPS QUANTITY	1	η down (%)	54.8	Power Factor (PF)	0.484
TEST VOLTAGE (V)	229.2	Effective Flux (lm)	356.8	EEL	0.135

LUMINOUS INTENSITY DISTRIBUTION
LUMINOUS INTENSITY DISTRIBUTION


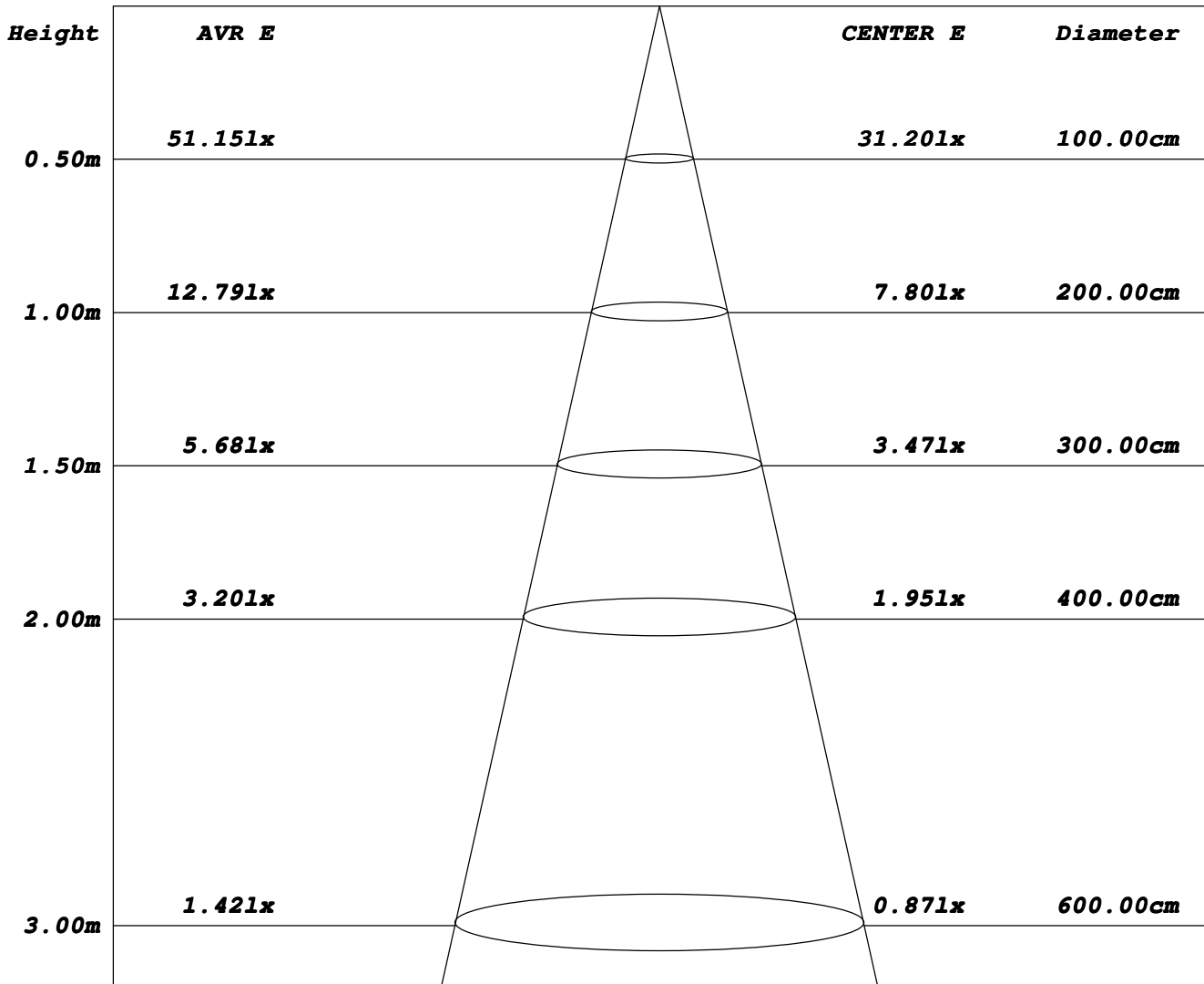
Test System: LSG-1800
Temperature: 25.3 DEG
Operators: a
Test Date: 12-21-2018

Test Set: 5.0deg/s C-Gamma (TYPE C)
Humidity: 65.0%
Test Distance: 10.000 m
Remarks:

AVERAGE AND CENTER E Figure

Report number: GO2018 - 324

MANUFACTURER: IDEAL LUX SRL	Address: Via Taglio Destro 32 - Mirano (VE)	
NAME: 201269 LAMPADINA DIAMOND	TYPE: LIGHTBULP	WEIGHT:
SPECIFICATION:	DIMENSION: D120	SERIAL No.:



Angle: 90.0deg

Test System: LSG-1800
 Temperature: 25.3DEG
 Operators: a
 Test Date: 12-21-2018

Test Set: 5.0deg/s C-Gamma (TYPE C)
 Humidity: 65.0%
 Test Distance: 10.000 m
 Remarks:

ZONAL FLUX DIAGRAM

Report number: GO2018 - 324

MANUFACTURER: IDEAL LUX SRL	Address: Via Taglio Destro 32 - Mirano (VE)	
NAME: 201269 LAMPADINA DIAMOND	TYPE: LIGHTBULP	WEIGHT:
SPECIFICATION:	DIMENSION: D120	SERIAL No.:

γ	C0	C45	C90	C135	C180	C225	C270	C315	γ	zone	total
5.0	9.099	10.10	8.200	7.200	6.900	7.800	7.900	8.100	0- 5	0.190	0.190
10.0	11.40	10.50	7.600	7.800	8.000	8.900	8.600	8.400	5- 10	0.617	0.807
15.0	12.50	11.40	9.600	9.700	10.00	10.20	10.50	10.30	10- 15	1.159	1.966
20.0	15.29	12.70	12.00	11.70	12.90	12.90	13.00	15.80	15- 20	1.958	3.924
25.0	19.40	16.79	17.00	16.79	16.90	16.40	18.60	21.29	20- 25	3.201	7.125
30.0	23.40	23.19	22.70	23.50	22.79	21.00	22.40	23.90	25- 30	5.028	12.15
35.0	27.00	29.40	26.19	27.50	26.19	24.20	25.40	29.80	30- 35	6.974	19.12
40.0	30.89	32.70	31.79	34.09	32.60	28.60	30.30	30.79	35- 40	9.300	28.42
45.0	33.00	33.19	35.79	39.09	40.79	33.50	32.60	33.19	40- 45	11.74	40.17
50.0	35.50	38.20	35.29	40.09	36.00	36.29	33.19	37.29	45- 50	13.64	53.81
55.0	38.60	42.50	38.29	41.50	38.70	37.00	35.00	39.00	50- 55	15.30	69.12
60.0	41.00	41.29	40.09	42.39	39.59	36.70	36.89	39.39	55- 60	16.59	85.71
65.0	40.70	41.29	40.70	42.39	40.70	36.79	37.70	38.20	60- 65	17.49	103.2
70.0	39.39	40.20	40.70	42.39	40.00	36.50	37.20	36.29	65- 70	18.16	121.3
75.0	37.50	38.80	41.20	41.50	40.29	35.40	36.50	35.60	70- 75	18.45	139.8
80.0	37.29	38.80	39.29	41.00	39.09	35.29	36.09	36.59	75- 80	18.69	158.5
85.0	37.70	36.39	37.70	39.59	39.70	36.29	35.20	36.00	80- 85	18.67	177.2
90.0	38.29	36.09	38.20	37.90	38.29	35.29	36.59	37.59	85- 90	18.42	195.6
95.0	37.20	35.40	38.29	38.29	40.09	37.20	36.70	37.29	90- 95	18.52	214.1
100.0	35.60	34.70	37.59	37.00	39.79	37.29	36.29	37.09	95-100	18.16	232.3
105.0	33.50	32.10	36.09	36.09	39.39	36.79	33.39	34.70	100-105	17.36	249.6
110.0	35.40	32.40	34.50	33.29	37.00	36.09	32.30	34.59	105-110	16.29	265.9
115.0	34.90	31.90	34.40	33.39	37.59	36.19	31.60	33.79	110-115	15.69	281.6
120.0	34.59	30.10	33.39	32.79	37.20	35.50	30.50	31.50	115-120	14.90	296.5
125.0	35.60	29.69	32.79	31.60	35.90	33.39	28.79	29.49	120-125	13.80	310.3
130.0	33.70	28.00	31.90	30.40	35.20	32.10	26.40	28.60	125-130	12.62	323.0
135.0	30.89	24.79	29.90	29.49	34.20	31.09	24.29	26.40	130-135	11.22	334.2
140.0	24.00	21.60	28.00	25.60	32.60	29.69	16.10	23.19	135-140	9.396	343.6
145.0	12.00	16.69	20.60	19.10	26.19	25.70	14.00	17.70	140-145	6.859	350.5
150.0	8.200	12.50	15.00	9.400	20.00	18.90	7.800	6.900	145-150	4.409	354.9
155.0	1.900	3.900	6.100	3.500	7.900	6.800	2.500	3.300	150-155	1.984	356.8
160.0	0.500	0	0.800	0	1.000	1.700	0	0.300	155-160	0.408	357.3
165.0	0	0	0	0	0	0	0	0	160-165	0.046	357.3
170.0	0	0	0	0	0	0	0	0	165-170	0.000	357.3
175.0	0	0	0	0	0	0	0	0	170-175	0	357.3
180.0	0	0	0	0	0	0	0	0	175-180	0	357.3
DEG	LUMINOUS INTENSITY: cd									UNIT: lm	

Test System: LSG-1800
Temperature: 25.3 DEG
Operators: a
Test Date: 12-21-2018

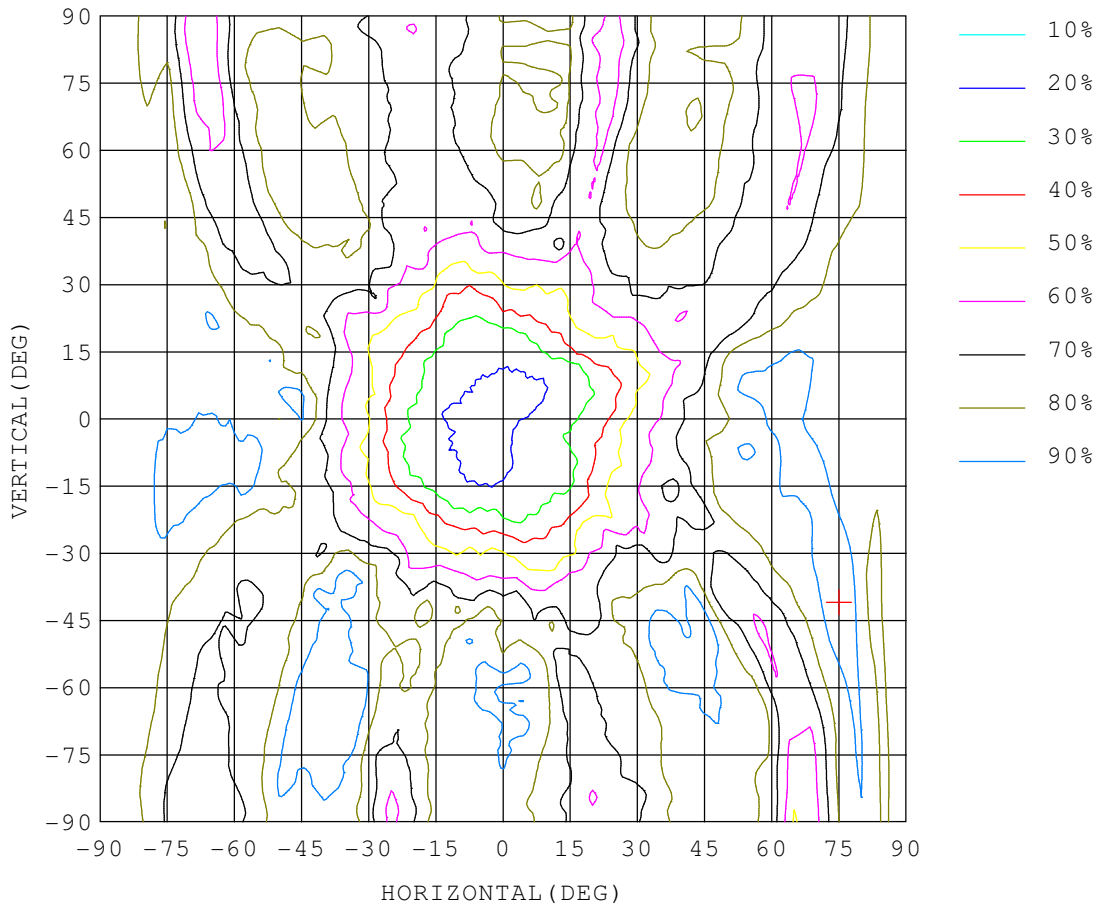
Test Set: 5.0 deg/s C-Gamma (TYPE C)
Humidity: 65.0%
Test Distance: 10.000 m
Remarks:

ISOCANDELA DIAGRAM

Report number: GO2018 - 324

MANUFACTURER: IDEAL LUX SRL	Address: Via Taglio Destro 32 - Mirano (VE)	
NAME: 201269 LAMPADINA DIAMOND	TYPE: LIGHTBULP	WEIGHT:
SPECIFICATION:	DIMENSION: D120	SERIAL No.:

UNIT: cd



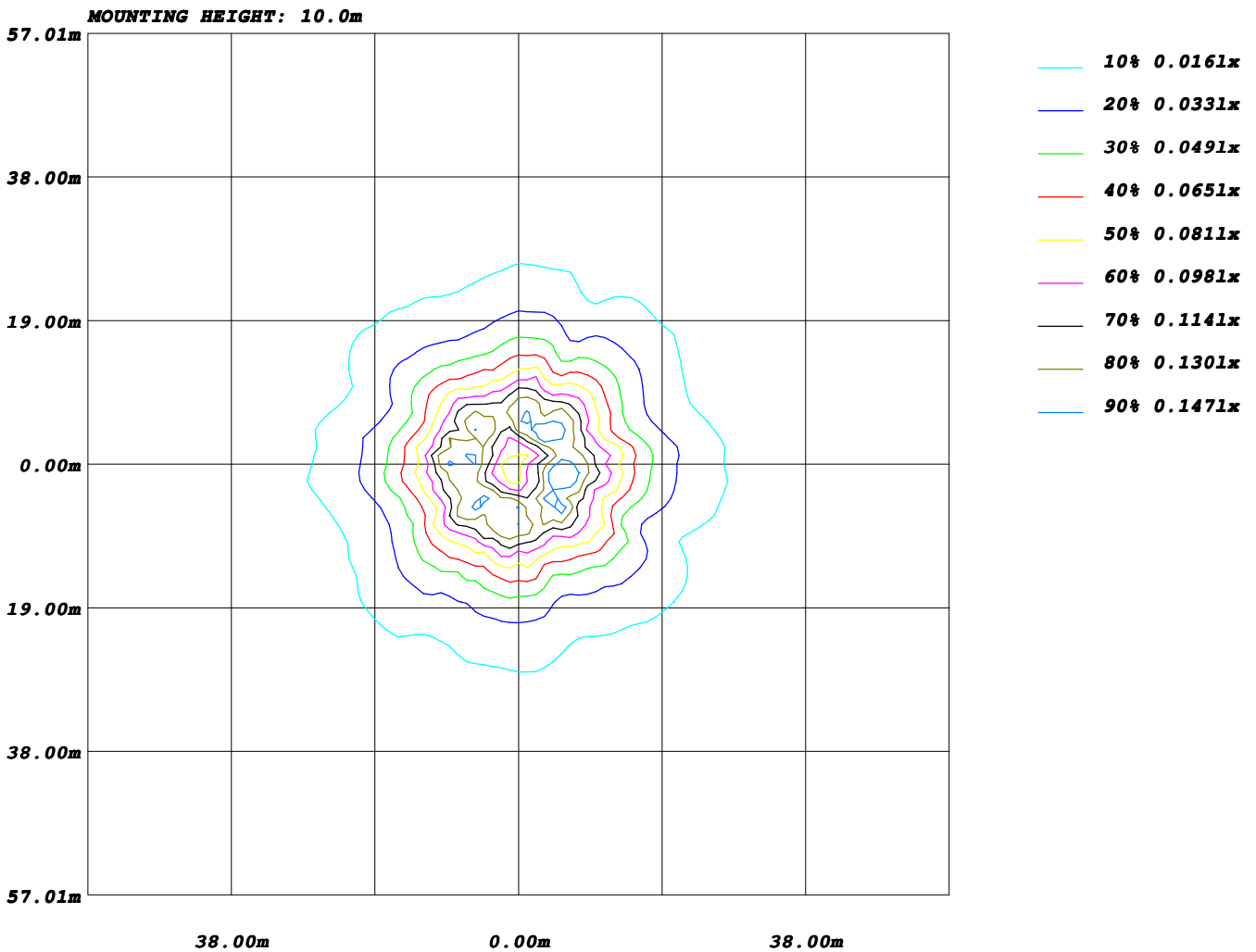
Test System: LSG-1800
Temperature: 25.3DEG
Operators: a
Test Date: 12-21-2018

Test Set: 5.0deg/s C-Gamma (TYPE C)
Humidity: 65.0%
Test Distance: 10.000 m
Remarks:

ISOLUX DIAGRAM

Report number: GO2018 - 324

MANUFACTURER: IDEAL LUX SRL	Address: Via Taglio Destro 32 - Mirano (VE)	
NAME: 201269 LAMPADINA DIAMOND	TYPE: LIGHTBULP	WEIGHT:
SPECIFICATION:	DIMENSION: D120	SERIAL No.:



Test System: LSG-1800
 Temperature: 25.3DEG
 Operators: a
 Test Date: 12-21-2018

Test Set: 5.0deg/s C-Gamma (TYPE C)
 Humidity: 65.0%
 Test Distance: 10.000 m
 Remarks:

AREA LUMINOUS FLUX

Report number: GO2018 - 324

MANUFACTURER: IDEAL LUX SRL	Address: Via Taglio Destro 32 - Mirano (VE)	
NAME: 201269 LAMPADINA DIAMOND	TYPE: LIGHTBULP	WEIGHT:
SPECIFICATION:	DIMENSION: D120	SERIAL No.:

		AREA FLUX DIAGRAM																	UNIT: lm		Φ_t	Φ_a
VERTICAL (DEG)	90	0.10	0.25	0.35	0.63	0.78	0.84	0.81	0.87	1.01	1.08	1.00	0.75	0.90	0.79	0.59	0.36	0.24	0.10	11.4	11.4	
	80	0.10	0.27	0.35	0.64	0.79	0.86	0.85	0.88	1.02	1.09	1.00	0.78	0.91	0.79	0.58	0.35	0.24	0.10	11.6	11.6	
	70	0.10	0.28	0.36	0.63	0.81	0.87	0.86	0.89	1.04	1.12	0.98	0.83	0.94	0.79	0.57	0.36	0.25	0.10	11.7	11.7	
	60	0.10	0.29	0.37	0.60	0.84	0.89	0.86	0.87	0.99	1.07	0.92	0.90	0.96	0.81	0.55	0.36	0.26	0.10	11.7	11.7	
	50	0.10	0.29	0.41	0.55	0.81	0.92	0.86	0.83	0.89	0.99	0.86	0.92	0.94	0.76	0.53	0.37	0.27	0.10	11.4	11.4	
	40	0.10	0.30	0.45	0.54	0.73	0.87	0.84	0.73	0.73	0.81	0.78	0.88	0.85	0.70	0.51	0.41	0.29	0.10	10.6	10.6	
	30	0.10	0.30	0.49	0.60	0.72	0.74	0.70	0.56	0.49	0.59	0.67	0.77	0.74	0.63	0.54	0.45	0.30	0.10	9.50	9.50	
	20	0.10	0.30	0.51	0.67	0.75	0.70	0.55	0.41	0.32	0.36	0.49	0.59	0.66	0.66	0.65	0.51	0.31	0.10	8.62	8.62	
	10	0.10	0.31	0.51	0.67	0.82	0.67	0.49	0.33	0.25	0.26	0.35	0.50	0.65	0.71	0.70	0.53	0.30	0.10	8.25	8.25	
	0	0.10	0.32	0.53	0.69	0.77	0.66	0.46	0.30	0.23	0.30	0.40	0.58	0.70	0.75	0.69	0.52	0.31	0.10	8.42	8.42	
	-10	0.10	0.33	0.53	0.68	0.75	0.68	0.53	0.38	0.30	0.33	0.43	0.63	0.74	0.72	0.69	0.53	0.31	0.10	8.75	8.75	
	-20	0.10	0.32	0.48	0.60	0.72	0.78	0.73	0.60	0.55	0.49	0.60	0.73	0.74	0.69	0.63	0.51	0.32	0.10	9.70	9.70	
	-30	0.10	0.30	0.44	0.57	0.74	0.97	0.91	0.84	0.82	0.76	0.79	0.91	0.87	0.73	0.55	0.48	0.33	0.10	11.2	11.2	
	-40	0.10	0.28	0.42	0.57	0.81	1.00	0.97	1.03	1.09	1.02	0.93	0.97	1.00	0.84	0.52	0.43	0.33	0.10	12.4	12.4	
	-50	0.10	0.28	0.40	0.59	0.85	1.03	1.00	1.06	1.20	1.17	0.93	0.96	0.98	0.88	0.60	0.39	0.31	0.10	12.8	12.8	
	-60	0.10	0.27	0.40	0.60	0.88	1.05	0.96	1.09	1.21	1.20	0.93	0.91	0.92	0.86	0.66	0.38	0.29	0.10	12.8	12.8	
	-70	0.10	0.26	0.39	0.62	0.89	1.00	0.86	1.07	1.17	1.16	0.92	0.86	0.90	0.84	0.66	0.36	0.28	0.10	12.4	12.4	
	-80	0.10	0.24	0.37	0.61	0.85	0.95	0.81	1.06	1.15	1.10	0.90	0.81	0.86	0.80	0.64	0.35	0.27	0.10	11.9	11.9	
-90		0.10	0.25	0.35	0.63	0.78	0.84	0.81	0.87	1.01	1.08	1.00	0.75	0.90	0.79	0.59	0.36	0.24	0.10	11.4	11.4	
		-90	-80	-70	-60	-50	-40	-30	-20	HORIZONTAL (DEG)	20	30	40	50	60	70	80	90				
Φ_t	1.83	5.17	7.76	11.0	14.3	15.4	14.0	13.8	14.4	14.9	13.8	14.2	15.2	13.7	10.8	7.65	5.19	1.78	357			
Φ_a	1.83	5.17	7.76	11.0	14.3	15.4	14.0	13.8	14.4	14.9	13.8	14.2	15.2	13.7	10.8	7.65	5.19	1.78		357		

Test System: LSG-1800
Temperature: 25.3DEG
Operators: a
Test Date: 12-21-2018

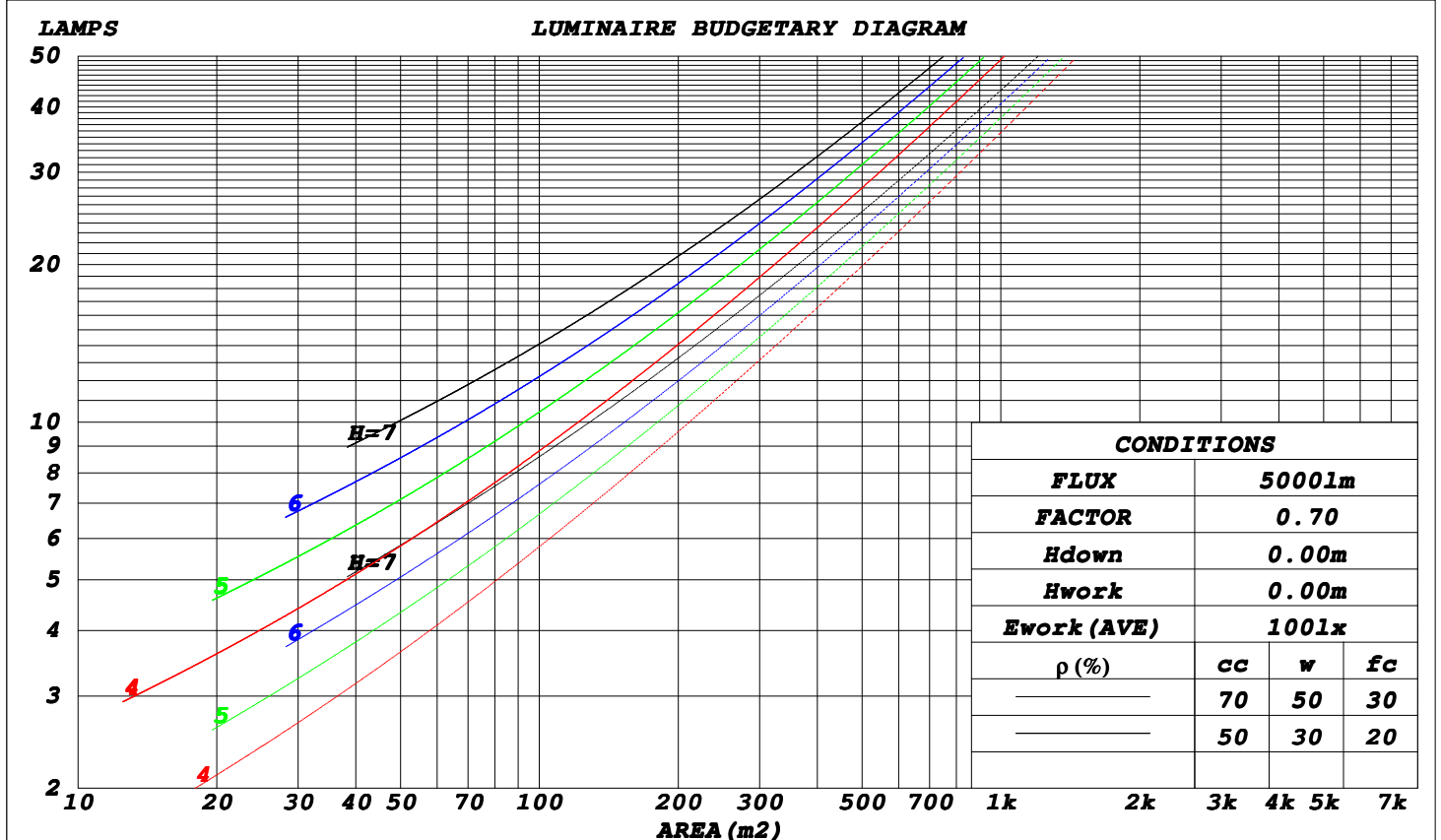
Test Set: 5.0deg/s C-Gamma (TYPE C)
Humidity: 65.0%
Test Distance: 10.000 m
Remarks:

CU AND LUMINAIRE BUDGETARY ESTIMATE DIAGRAM

Report number: GO2018 - 324

MANUFACTURER: IDEAL LUX SRL				Address: Via Taglio Destro 32 - Mirano (VE)			
NAME: 201269 LAMPADINA DIAMOND				TYPE: LIGHTBULP		WEIGHT:	
SPECIFICATION:				DIMENSION: D120		SERIAL No.:	

ρ_{cc}	80%			70%			50%			30%			10%			0
ρ_w	50%	30%	10%	50%	30%	10%	50%	30%	10%	50%	30%	10%	50%	30%	10%	0
ρ_{fc}	20%			20%			20%			20%			20%			0
RCR	RCR: Room Cavity Ratio						Coefficients of Utilization (CU)									
0.0	1.08	1.08	1.08	1.01	1.01	1.01	.86	.86	.86	.73	.73	.73	.60	.60	.60	.55
1.0	.87	.81	.75	.80	.75	.70	.67	.63	.59	.56	.52	.50	.45	.43	.40	.35
2.0	.73	.64	.57	.67	.59	.53	.56	.50	.45	.46	.41	.37	.36	.33	.30	.25
3.0	.62	.52	.45	.57	.48	.42	.47	.41	.35	.38	.33	.29	.30	.26	.23	.18
4.0	.54	.44	.36	.49	.40	.34	.41	.34	.28	.33	.28	.23	.26	.22	.18	.14
5.0	.47	.37	.30	.43	.34	.28	.36	.29	.23	.29	.23	.19	.23	.18	.15	.11
6.0	.41	.32	.25	.38	.29	.23	.32	.25	.19	.26	.20	.16	.20	.16	.12	.09
7.0	.37	.28	.21	.34	.26	.20	.28	.21	.16	.23	.17	.13	.18	.14	.10	.07
8.0	.33	.24	.18	.31	.22	.17	.25	.19	.14	.21	.15	.11	.16	.12	.09	.06
9.0	.30	.22	.16	.28	.20	.15	.23	.17	.12	.19	.14	.10	.15	.11	.07	.05
10.0	.27	.19	.14	.25	.18	.13	.21	.15	.11	.17	.12	.09	.14	.10	.07	.04



Test System: LSG-1800
Temperature: 25.3DEG
Operators: a
Test Date: 12-21-2018

Test Set: 5.0deg/s C-Gamma (TYPE C)
Humidity: 65.0%
Test Distance: 10.000 m
Remarks:

WEC AND CCEC

Report number: GO2018 - 324

MANUFACTURER: IDEAL LUX SRL			Address: Via Taglio Destro 32 - Mirano (VE)					
NAME: 201269 LAMPADINA DIAMOND			TYPE: LIGHTBULP			WEIGHT:		
SPECIFICATION:			DIMENSION: D120			SERIAL No.:		

ρ_{cc}	80%			70%			50%			30%			10%			0
ρ_w	50%	30%	10%	50%	30%	10%	50%	30%	10%	50%	30%	10%	50%	30%	10%	0
ρ_{fc}	20%			20%			20%			20%			20%			0
RCR	RCR: Room Cavity Ratio						Wall Exitance Coefficients (WEC)									
0.0																
1.0	.430	.245	.077	.409	.233	.074	.369	.212	.068	.333	.192	.062	.300	.174	.056	
2.0	.358	.196	.060	.339	.187	.058	.303	.168	.052	.270	.151	.047	.239	.135	.043	
3.0	.311	.166	.050	.294	.157	.047	.261	.141	.043	.230	.126	.039	.202	.112	.035	
4.0	.277	.144	.042	.261	.136	.040	.230	.122	.036	.202	.109	.033	.176	.096	.029	
5.0	.249	.127	.037	.234	.120	.035	.206	.107	.032	.181	.095	.028	.156	.084	.025	
6.0	.226	.113	.032	.213	.107	.031	.187	.096	.028	.163	.085	.025	.141	.074	.022	
7.0	.207	.103	.029	.195	.097	.028	.171	.087	.025	.149	.076	.022	.128	.067	.020	
8.0	.191	.094	.026	.180	.089	.025	.158	.079	.023	.137	.070	.020	.118	.061	.018	
9.0	.178	.086	.024	.167	.081	.023	.147	.072	.021	.127	.064	.018	.109	.055	.016	
10.0	.166	.079	.022	.156	.075	.021	.137	.067	.019	.119	.059	.017	.102	.051	.015	

ρ_{cc}	80%			70%			50%			30%			10%			0
ρ_w	50%	30%	10%	50%	30%	10%	50%	30%	10%	50%	30%	10%	50%	30%	10%	0
ρ_{fc}	20%			20%			20%			20%			20%			0
RCR	RCR: Room Cavity Ratio						Ceiling Cavity Exitance Coefficients (CCEC)									
0.0	.535	.535	.535	.458	.458	.458	.312	.312	.312	.179	.179	.179	.057	.057	.057	
1.0	.536	.503	.473	.459	.432	.407	.314	.297	.281	.181	.172	.164	.058	.055	.053	
2.0	.531	.482	.440	.455	.415	.380	.312	.287	.265	.180	.167	.156	.058	.054	.051	
3.0	.524	.467	.420	.450	.402	.364	.309	.280	.256	.178	.163	.151	.057	.053	.049	
4.0	.517	.455	.408	.444	.393	.354	.305	.274	.249	.176	.161	.148	.057	.052	.049	
5.0	.510	.446	.399	.438	.386	.347	.301	.270	.245	.175	.158	.145	.056	.052	.048	
6.0	.502	.439	.393	.432	.380	.342	.298	.266	.242	.173	.156	.144	.056	.051	.048	
7.0	.495	.433	.389	.426	.375	.339	.294	.263	.240	.171	.155	.143	.055	.051	.047	
8.0	.489	.427	.385	.421	.371	.336	.291	.260	.238	.169	.154	.142	.055	.050	.047	
9.0	.482	.423	.383	.416	.367	.334	.288	.258	.237	.168	.152	.141	.054	.050	.047	
10.0	.477	.419	.381	.411	.364	.332	.285	.256	.236	.166	.151	.141	.054	.050	.047	

Test System: LSG-1800
Temperature: 25.3 DEG
Operators: a
Test Date: 12-21-2018

Test Set: 5.0 deg/s C-Gamma (TYPE C)
Humidity: 65.0%
Test Distance: 10.000 m
Remarks:

Uncorrected UGR Table

Report number: GO2018 - 324

MANUFACTURER: IDEAL LUX SRL	Address: Via Taglio Destro 32 - Mirano (VE)	
NAME: 201269 LAMPADINA DIAMOND	TYPE: LIGHTBULP	WEIGHT:
SPECIFICATION:	DIMENSION: D120	SERIAL No.:

ceiling/cavity	0.7	0.7	0.5	0.5	0.3	0.7	0.7	0.5	0.5	0.3
walls	0.5	0.3	0.5	0.3	0.3	0.5	0.3	0.5	0.3	0.3
working plane	0.2	0.2	0.2	0.2	0.2	0.2	0.2	0.2	0.2	0.2
Room dimensions	Viewed crosswise					Viewed endwise				
x = 2H y = 2H	8.5	9.6	9.3	10.5	11.6	8.3	9.5	9.1	10.3	11.4
3H	12.0	13.0	12.8	13.9	15.0	11.6	12.7	12.4	13.5	14.6
4H	14.0	15.0	14.8	15.9	17.0	13.5	14.5	14.3	15.4	16.5
6H	16.2	17.1	17.0	18.0	19.2	15.6	16.5	16.5	17.4	18.6
8H	17.2	18.1	18.1	19.0	20.2	16.8	17.7	17.7	18.6	19.8
12H	18.3	19.2	19.2	20.1	21.3	18.1	19.0	19.0	19.9	21.1
4H 2H	9.7	10.7	10.5	11.6	12.7	9.5	10.5	10.4	11.4	12.6
3H	12.9	13.8	13.8	14.7	15.9	12.7	13.5	13.6	14.5	15.6
4H	14.9	15.7	15.8	16.6	17.8	14.5	15.3	15.4	16.2	17.4
6H	17.2	17.9	18.1	18.9	20.1	16.6	17.3	17.6	18.3	19.5
8H	18.5	19.2	19.4	20.1	21.4	17.9	18.6	18.8	19.5	20.8
12H	19.9	20.5	20.8	21.4	22.7	19.4	20.0	20.3	21.0	22.2
8H 4H	15.6	16.3	16.6	17.3	18.5	15.3	16.0	16.3	17.0	18.2
6H	18.1	18.7	19.1	19.6	20.9	17.6	18.2	18.6	19.2	20.4
8H	19.4	19.9	20.3	20.9	22.2	18.9	19.4	19.9	20.4	21.7
12H	20.9	21.4	21.9	22.4	23.7	20.4	20.9	21.4	21.9	23.2
12H 4H	15.8	16.4	16.7	17.4	18.6	15.5	16.2	16.5	17.1	18.4
6H	18.4	18.9	19.4	19.9	21.2	18.0	18.5	19.0	19.5	20.8
8H	19.8	20.3	20.8	21.3	22.6	19.4	19.8	20.4	20.8	22.1
Variations with the observer position at spacings:										
S = 1.0H	+ 0.1 / - 0.1					+ 0.1 / - 0.1				
1.5H	+ 0.3 / - 0.3					+ 0.2 / - 0.2				
2.0H	+ 0.4 / - 0.5					+ 0.3 / - 0.3				

CIE Pub.117 Corrected 357.2 lm Total Lamp Luminous Flux. (8log(F/F0) = -3.6)

Test System: LSG-1800
 Temperature: 25.3 DEG
 Operators: a
 Test Date: 12-21-2018

Test Set: 5.0 deg/s C-Gamma (TYPE C)
 Humidity: 65.0%
 Test Distance: 10.000 m
 Remarks:

UTILIZATION FACTORS TABLE

Report number: GO2018 - 324

MANUFACTURER: IDEAL LUX SRL	Address: Via Taglio Destro 32 - Mirano (VE)	
NAME: 201269 LAMPADINA DIAMOND	TYPE: LIGHTBULP	WEIGHT:
SPECIFICATION:	DIMENSION: D120	SERIAL No.:

REFLECTANCE										
Ceiling	0.8	0.8	0.8	0.7	0.7	0.7	0.5	0.5	0.5	0
Walls	0.7	0.5	0.3	0.7	0.5	0.3	0.7	0.5	0.3	0
Working plane	0.2	0.2	0.2	0.2	0.2	0.2	0.2	0.2	0.2	0
ROOM INDEX	UTILIZATION FACTORS (PERCENT) $k(RI) \times RCR = 5$									
k = 0.60	35	22	14	33	21	14	30	19	13	5
0.80	43	29	20	41	28	19	36	25	18	8
1.00	51	36	27	48	34	25	42	33	23	12
1.25	58	43	33	54	41	32	47	36	28	15
1.50	63	49	39	59	46	37	51	40	33	18
2.00	71	58	48	66	54	45	57	47	40	23
2.50	77	64	54	71	60	51	61	52	45	26
3.00	81	69	60	75	65	56	64	56	49	29
4.00	86	76	68	80	71	64	68	61	55	33
5.00	90	81	74	83	75	69	71	65	60	36
ROOM INDEX	UF (total)									Direct
According to DIN EN 13032-2 2004			Suspended				SHRNOM = 1.25			

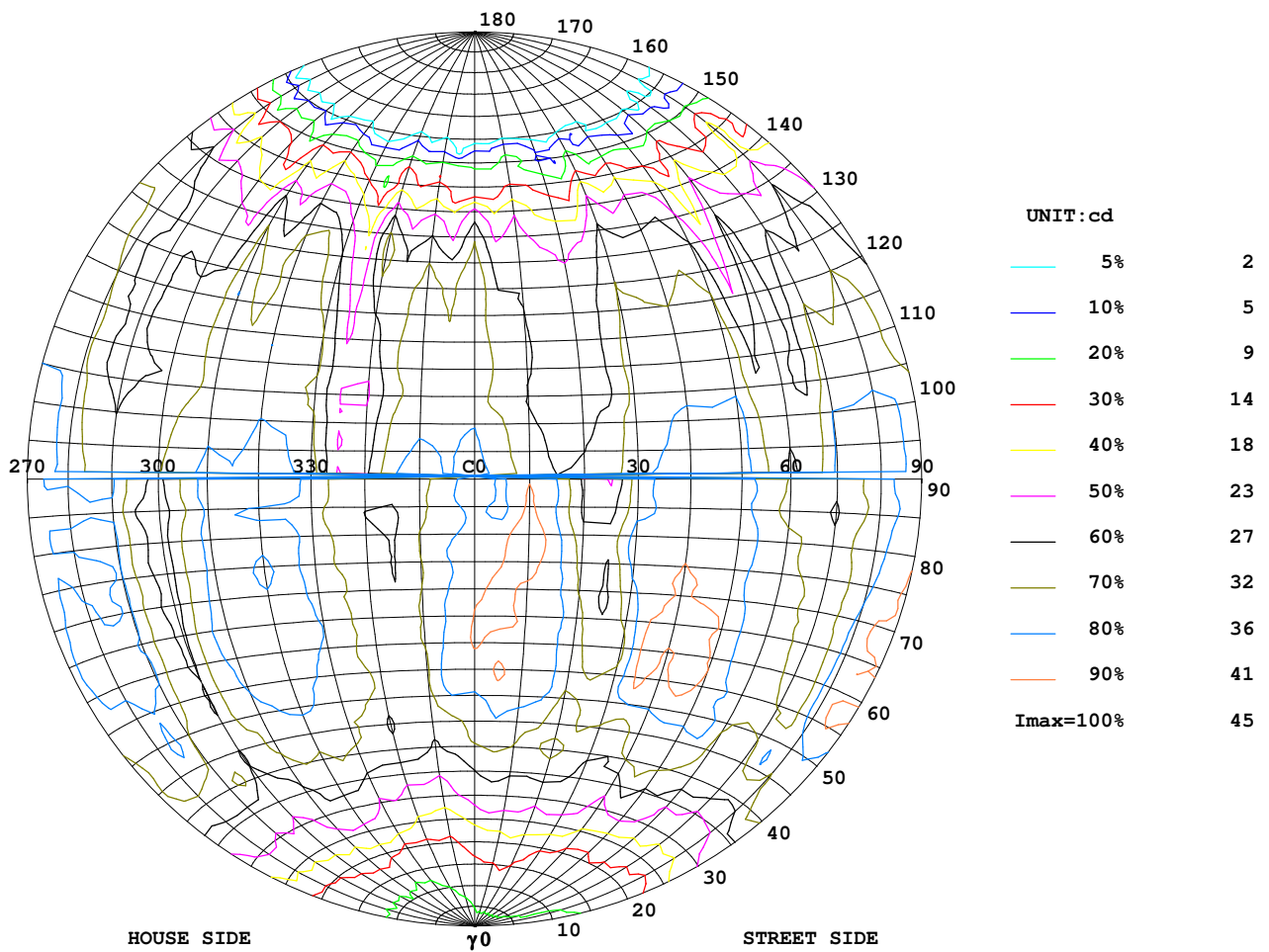
Test System: LSG-1800
 Temperature: 25.3 DEG
 Operators: a
 Test Date: 12-21-2018

Test Set: 5.0 deg/s C-Gamma (TYPE C)
 Humidity: 65.0%
 Test Distance: 10.000 m
 Remarks:

ISOCANDELA DIAGRAM

Report number: GO2018 - 324

MANUFACTURER: IDEAL LUX SRL	Address: Via Taglio Destro 32 - Mirano (VE)	
NAME: 201269 LAMPADINA DIAMOND	TYPE: LIGHTBULP	WEIGHT:
SPECIFICATION:	DIMENSION: D120	SERIAL No.:



Test System: LSG-1800
 Temperature: 25.3 DEG
 Operators: a
 Test Date: 12-21-2018

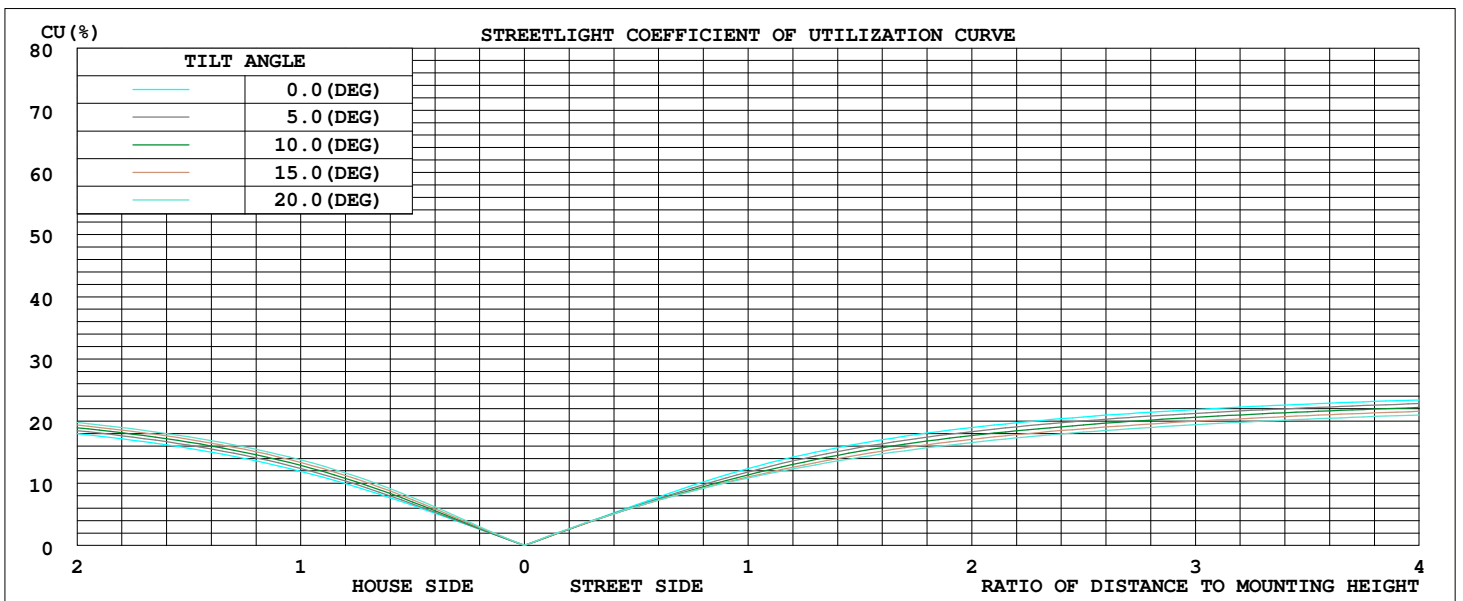
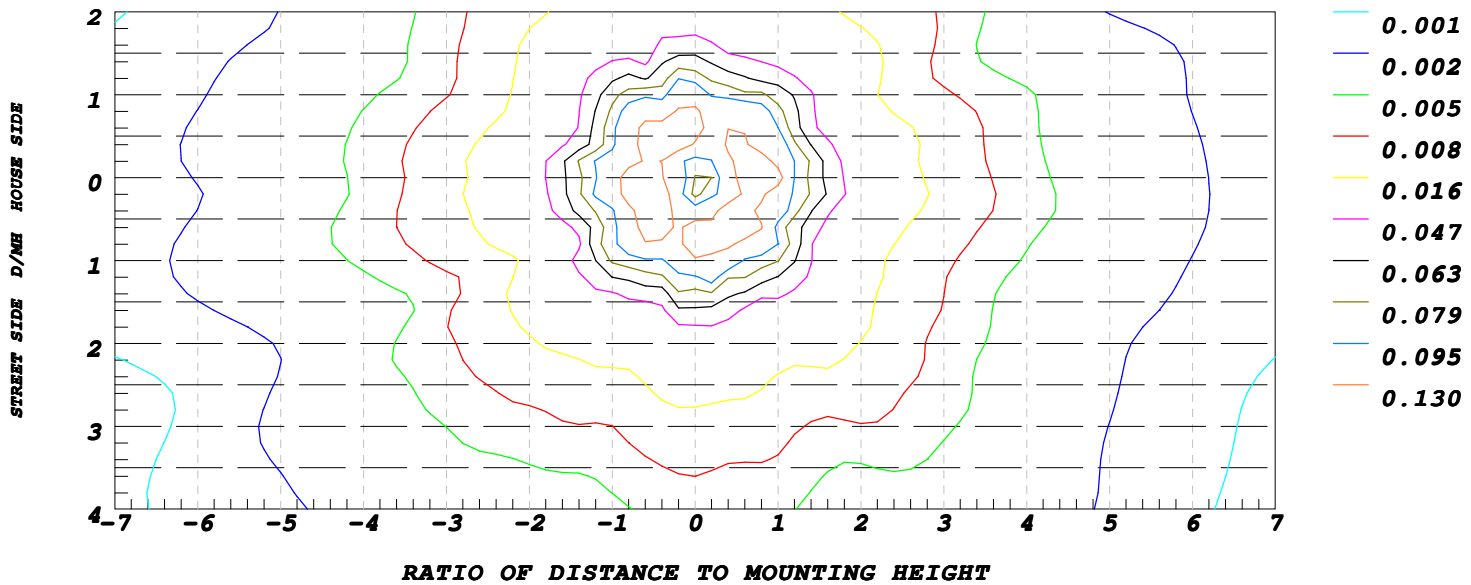
Test Set: 5.0 deg/s C-Gamma (TYPE C)
 Humidity: 65.0%
 Test Distance: 10.000 m
 Remarks:

ISOLUX DIAGRAM

Report number: GO2018 - 324

MANUFACTURER: IDEAL LUX SRL	Address: Via Taglio Destro 32 - Mirano (VE)	
NAME: 201269 LAMPADINA DIAMOND	TYPE: LIGHTBULP	WEIGHT:
SPECIFICATION:	DIMENSION: D120	SERIAL No.:

ILLUMINANCE AT MH=10 m, Enadir = 0.08 lx



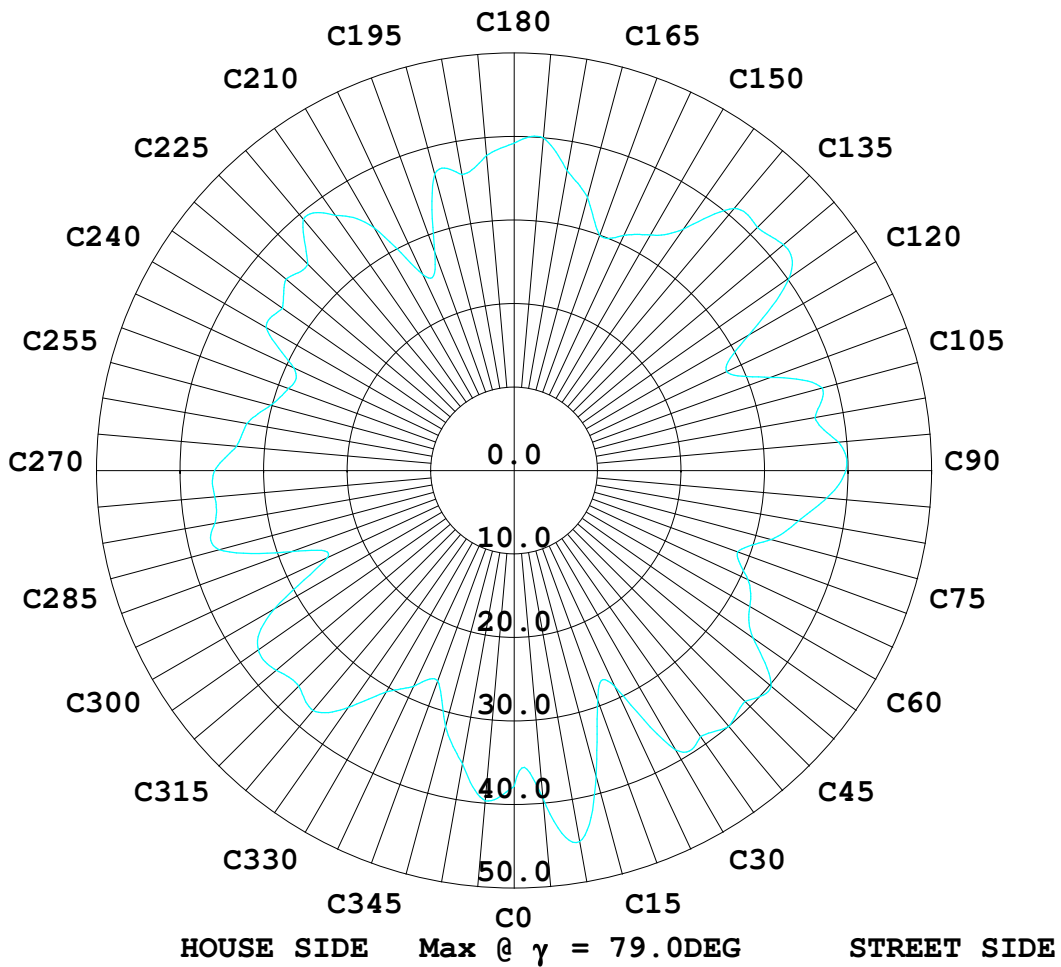
Test System: LSG-1800
Temperature: 25.3 DEG
Operators: a
Test Date: 12-21-2018

Test Set: 5.0deg/s C-Gamma (TYPE C)
Humidity: 65.0%
Test Distance: 10.000 m
Remarks:

ISOCANDELA DIAGRAM

Report number: GO2018 - 324

MANUFACTURER: IDEAL LUX SRL	Address: Via Taglio Destro 32 - Mirano (VE)	
NAME: 201269 LAMPADINA DIAMOND	TYPE: LIGHTBULP	WEIGHT:
SPECIFICATION:	DIMENSION: D120	SERIAL No.:



Test System: LSG-1800
 Temperature: 25.3DEG
 Operators: a
 Test Date: 12-21-2018

Test Set: 5.0deg/s C-Gamma (TYPE C)
 Humidity: 65.0%
 Test Distance: 10.000 m
 Remarks:

LUMINOUS DISTRIBUTION INTENSITY DATA

Report number: GO2018 - 324

MANUFACTURER: IDEAL LUX SRL	Address: Via Taglio Destro 32 - Mirano (VE)	
NAME: 201269 LAMPADINA DIAMOND	TYPE: LIGHTBULP	WEIGHT:
SPECIFICATION:	DIMENSION: D120	SERIAL No.:

UNIT: cd

γ (DEG)	C (DEG)														
	0	5	10	15	20	25	30	35	40	45	50	55	60	65	70
0.0	7.80	7.90	7.80	7.80	7.70	7.70	7.70	7.80	7.80	7.80	7.70	7.70	7.60	7.60	7.60
5.0	9.09	9.50	9.50	9.80	9.60	10.0	9.80	10.2	9.80	10.1	9.70	9.70	9.20	9.09	8.80
10.0	11.4	12.1	11.9	12.6	12.6	12.5	11.8	10.9	10.4	10.5	10.0	10.0	9.40	9.60	9.30
15.0	12.5	13.3	13.3	14.0	13.5	12.5	10.5	11.1	11.0	11.4	11.1	11.0	10.8	11.0	10.7
20.0	15.2	16.4	16.5	17.2	16.2	15.5	14.5	14.0	13.0	12.7	12.6	13.5	12.9	13.0	12.3
25.0	19.4	21.1	20.6	21.1	20.8	21.0	20.2	20.2	17.7	16.7	16.5	16.9	16.2	16.2	14.9
30.0	23.4	25.0	25.4	24.4	23.7	24.9	23.9	23.4	21.0	23.1	22.9	22.7	20.8	20.2	19.1
35.0	27.0	29.0	27.4	27.5	29.3	27.9	25.7	26.1	24.4	29.4	26.4	26.9	23.9	24.6	22.0
40.0	30.8	32.9	31.4	30.7	33.2	30.3	28.2	27.1	31.7	32.7	32.7	30.8	30.1	29.8	29.4
45.0	33.0	35.7	33.7	32.5	28.5	32.0	31.2	28.4	34.5	33.1	35.9	35.0	30.5	30.3	30.3
50.0	35.5	38.4	37.9	36.5	30.5	32.3	32.6	36.2	36.2	38.2	37.0	38.2	32.1	30.4	32.2
55.0	38.6	41.1	39.2	38.2	33.0	30.7	32.5	41.4	39.2	42.5	39.8	36.3	35.2	34.5	31.0
60.0	41.0	39.5	40.0	37.7	33.1	29.0	30.3	42.3	40.2	41.2	40.5	35.4	34.9	33.2	29.4
65.0	40.7	41.2	40.2	38.9	33.0	27.2	32.7	40.7	41.8	41.2	40.5	35.2	34.7	32.4	29.4
70.0	39.3	42.0	39.5	38.0	31.2	26.1	34.9	39.2	40.9	40.2	39.0	34.5	34.0	31.7	28.9
75.0	37.5	40.4	43.0	37.7	30.4	26.8	37.4	38.1	40.7	38.8	38.2	34.5	33.0	31.2	28.6
80.0	37.2	38.8	44.7	37.5	28.7	28.2	38.0	38.7	39.3	38.8	40.4	34.9	32.6	31.0	28.2
85.0	37.7	34.4	41.7	35.9	26.1	25.0	34.5	36.7	36.8	36.3	38.1	33.3	30.1	28.7	26.4
90.0	38.2	35.4	40.2	36.0	26.0	22.0	34.4	37.0	37.2	36.0	37.5	34.7	31.2	30.0	28.2
95.0	37.2	35.5	37.0	33.8	24.5	22.6	32.7	36.5	37.0	35.4	36.1	33.5	30.5	29.6	28.0
100.0	35.6	35.1	35.1	32.2	23.7	22.7	32.2	35.5	36.1	34.7	35.7	32.4	29.8	28.5	27.0
105.0	33.5	34.0	33.7	30.5	22.0	22.3	30.8	33.0	34.0	32.1	34.0	29.8	28.5	27.5	25.6
110.0	35.4	34.7	35.2	31.2	23.8	23.1	32.2	35.0	35.5	32.4	35.0	29.4	28.0	27.4	25.4
115.0	34.9	33.1	35.7	31.0	25.2	22.3	31.7	35.6	35.7	31.9	35.4	29.4	28.4	27.7	26.3
120.0	34.5	31.4	34.4	30.3	27.2	21.6	30.4	34.5	34.2	30.1	35.5	28.2	27.5	27.7	25.9
125.0	35.6	30.5	33.7	29.4	30.1	19.9	29.0	33.8	32.9	29.6	34.5	26.9	26.4	27.4	26.1
130.0	33.7	27.7	31.4	27.0	33.0	18.2	27.2	34.0	32.7	28.0	33.1	24.1	24.6	25.7	26.0
135.0	30.8	21.7	27.1	23.5	32.1	17.6	23.9	30.8	29.8	24.7	30.7	21.5	23.1	25.5	24.4
140.0	24.0	17.8	21.1	18.2	24.1	13.7	20.1	25.2	25.7	21.6	26.1	17.2	18.4	22.4	24.2
145.0	12.0	11.9	14.8	13.0	15.6	8.40	13.3	18.7	20.8	16.6	19.0	12.0	15.5	17.1	19.3
150.0	8.20	7.40	8.90	8.00	10.5	6.60	7.60	8.60	12.3	12.5	12.4	8.20	12.5	13.0	13.4
155.0	1.90	1.20	2.40	1.70	3.60	1.40	1.30	1.00	2.90	3.90	3.30	1.50	4.50	3.90	4.40
160.0	0.50	0.20	0.70	0.00	0.20	0.00	0.90	0.00	0.20	0.00	1.00	0.00	0.50	0.00	0.50
165.0	0.00	0.00	0.00	0.00	0.00	0.00	0.00	0.00	0.00	0.00	0.00	0.00	0.00	0.00	0.00
170.0	0.00	0.00	0.00	0.00	0.00	0.00	0.00	0.00	0.00	0.00	0.00	0.00	0.00	0.00	0.00
175.0	0.00	0.00	0.00	0.00	0.00	0.00	0.00	0.00	0.00	0.00	0.00	0.00	0.00	0.00	0.00
180.0	0.00	0.00	0.00	0.00	0.00	0.00	0.00	0.00	0.00	0.00	0.00	0.00	0.00	0.00	0.00

Test System:LSG-1800
Temperature:25.3DEG
Operators:a
Test Date:12-21-2018

Test Set: 5.0deg/s C-Gamma (TYPE C)
Humidity:65.0%
Test Distance:10.000 m
Remarks:

LUMINOUS DISTRIBUTION INTENSITY DATA
Report number: GO2018 - 324

MANUFACTURER: IDEAL LUX SRL	Address: Via Taglio Destro 32 - Mirano (VE)	
NAME: 201269 LAMPADINA DIAMOND	TYPE: LIGHTBULP	WEIGHT:
SPECIFICATION:	DIMENSION: D120	SERIAL No.:

UNIT: cd

γ (DEG)	C (DEG)														
	75	80	85	90	95	100	105	110	115	120	125	130	135	140	145
0.0	7.70	7.60	7.80	7.80	7.80	7.80	7.80	7.70	7.60	7.70	7.70	7.80	7.80	7.70	7.70
5.0	8.90	8.70	8.60	8.20	7.90	7.60	7.60	7.30	7.40	7.20	7.20	7.10	7.20	7.00	7.00
10.0	9.30	8.70	8.29	7.60	7.60	7.70	8.10	7.70	7.60	7.40	7.60	7.50	7.80	7.70	8.10
15.0	10.8	10.2	10.3	9.60	9.40	8.70	9.09	8.50	8.80	8.60	9.00	8.80	9.70	9.50	9.60
20.0	12.5	11.5	11.9	12.0	13.2	12.8	13.0	11.8	11.8	11.2	12.0	11.5	11.7	11.4	12.0
25.0	15.5	14.8	16.0	17.0	17.9	16.7	17.9	16.6	16.5	16.1	17.2	16.3	16.7	15.5	15.5
30.0	19.7	19.5	21.5	22.7	23.5	22.1	23.0	21.0	21.6	21.1	22.0	22.5	23.5	21.7	21.6
35.0	22.7	23.1	26.4	26.1	26.9	25.5	26.1	26.6	26.6	24.4	24.2	26.3	27.5	25.9	25.2
40.0	28.0	28.2	33.0	31.7	34.4	30.7	30.3	32.4	32.7	28.5	28.2	33.1	34.0	31.6	31.2
45.0	34.4	31.2	34.9	35.7	37.5	36.0	35.6	33.5	38.5	32.2	34.2	34.2	39.0	38.6	36.2
50.0	35.2	34.5	36.2	35.2	38.6	41.2	36.5	32.9	35.7	33.3	35.1	36.7	40.0	42.8	37.9
55.0	30.5	38.6	40.9	38.2	41.0	39.2	37.4	33.5	37.7	36.0	39.0	39.2	41.5	40.5	41.0
60.0	30.4	39.5	39.7	40.0	41.7	38.8	37.7	34.2	36.5	33.5	39.8	40.4	42.3	40.5	37.0
65.0	31.2	37.9	40.2	40.7	40.5	39.2	39.8	34.7	35.5	34.5	42.2	42.2	42.3	40.5	35.7
70.0	31.7	36.8	41.1	40.7	38.9	38.6	39.0	34.5	32.3	34.2	42.6	43.0	42.3	41.1	35.2
75.0	31.2	35.2	39.0	41.2	38.2	37.0	38.7	34.2	30.7	32.4	42.0	43.9	41.5	40.7	35.0
80.0	31.9	34.5	37.5	39.2	38.9	36.7	38.4	32.5	27.7	32.7	40.0	41.6	41.0	41.1	35.4
85.0	30.4	33.2	36.3	37.7	38.4	37.2	38.1	31.9	26.1	33.5	39.5	41.0	39.5	41.2	34.9
90.0	30.7	34.5	37.0	38.2	37.7	38.2	38.6	31.4	25.6	33.5	39.7	39.3	37.9	38.6	34.0
95.0	30.0	34.0	37.4	38.2	36.8	38.2	38.2	31.0	24.9	34.5	39.0	38.8	38.2	37.9	35.0
100.0	28.7	33.8	37.2	37.5	36.1	37.4	37.2	29.4	23.8	33.7	37.9	38.7	37.0	37.0	34.0
105.0	27.7	33.2	35.7	36.0	34.7	35.4	34.7	28.0	22.7	32.7	36.2	37.2	36.0	36.0	32.4
110.0	27.4	32.6	34.2	34.5	33.7	33.7	32.6	25.9	20.9	31.2	33.1	34.2	33.2	34.2	30.4
115.0	27.5	32.9	35.4	34.4	33.2	34.0	32.3	25.9	21.6	31.0	33.5	34.2	33.3	34.2	30.1
120.0	26.9	31.4	34.9	33.3	31.9	32.9	31.4	25.9	22.2	30.5	32.9	34.2	32.7	34.0	29.6
125.0	26.1	29.4	33.3	32.7	30.7	31.2	31.0	25.5	23.0	28.9	31.2	33.3	31.6	33.5	29.1
130.0	27.7	29.8	32.4	31.9	29.0	30.8	29.8	25.7	24.2	28.2	31.2	32.6	30.4	33.0	28.5
135.0	27.2	29.4	30.1	29.9	27.7	29.9	29.6	25.7	24.1	26.3	31.7	33.5	29.4	32.3	28.7
140.0	22.9	28.4	26.1	28.0	24.4	27.2	26.3	22.7	23.2	24.0	30.1	30.3	25.6	30.3	25.9
145.0	16.0	22.7	20.7	20.6	19.3	22.4	18.7	19.1	16.5	17.6	21.9	23.1	19.1	25.7	20.8
150.0	10.5	15.7	13.9	15.0	14.7	16.1	13.7	15.6	11.4	10.2	9.30	10.4	9.40	17.0	15.7
155.0	3.50	5.60	3.60	6.10	4.60	6.00	4.50	6.00	2.80	3.00	2.80	2.00	3.50	4.90	4.30
160.0	0.00	0.60	0.00	0.80	0.30	1.10	0.50	0.70	0.20	0.70	0.00	0.50	0.00	1.20	0.40
165.0	0.00	0.00	0.00	0.00	0.00	0.00	0.00	0.00	0.00	0.00	0.00	0.00	0.00	0.00	0.00
170.0	0.00	0.00	0.00	0.00	0.00	0.00	0.00	0.00	0.00	0.00	0.00	0.00	0.00	0.00	0.00
175.0	0.00	0.00	0.00	0.00	0.00	0.00	0.00	0.00	0.00	0.00	0.00	0.00	0.00	0.00	0.00
180.0	0.00	0.00	0.00	0.00	0.00	0.00	0.00	0.00	0.00	0.00	0.00	0.00	0.00	0.00	0.00

Test System: LSG-1800
Temperature: 25.3DEG
Operators: a
Test Date: 12-21-2018
Test Set: 5.0deg/s C-Gamma (TYPE C)
Humidity: 65.0%
Test Distance: 10.000 m
Remarks:

LUMINOUS DISTRIBUTION INTENSITY DATA
Report number: GO2018 - 324

MANUFACTURER: IDEAL LUX SRL	Address: Via Taglio Destro 32 - Mirano (VE)	
NAME: 201269 LAMPADINA DIAMOND	TYPE: LIGHTBULP	WEIGHT:
SPECIFICATION:	DIMENSION: D120	SERIAL No.:

UNIT: cd

C (DEG) \ γ (DEG)	150	155	160	165	170	175	180	185	190	195	200	205	210	215	220
0.0	7.70	7.50	7.60	7.60	7.70	7.80	7.80	7.90	7.80	7.80	7.70	7.70	7.70	7.80	7.80
5.0	6.70	6.70	6.60	6.80	6.70	6.90	6.90	6.80	6.90	7.10	7.40	7.50	7.70	7.80	7.90
10.0	8.00	8.40	8.40	8.70	8.20	8.29	8.00	7.90	8.20	8.20	9.00	8.70	8.80	8.90	9.20
15.0	9.30	9.50	9.60	10.2	9.60	10.2	10.0	9.60	10.4	10.5	10.8	10.5	10.9	11.0	11.0
20.0	11.5	11.8	11.5	12.0	11.7	13.0	12.9	12.6	13.7	13.5	14.1	13.5	13.3	12.7	13.2
25.0	14.0	14.7	15.0	15.6	14.9	16.5	16.9	16.3	17.4	16.6	17.1	16.7	16.9	16.2	17.0
30.0	20.5	20.4	20.4	21.4	20.9	22.3	22.7	21.6	22.9	22.2	21.7	20.2	20.7	21.0	20.2
35.0	24.0	24.2	25.2	24.7	25.2	27.4	26.1	26.1	26.6	26.8	26.3	23.8	23.1	25.2	26.6
40.0	28.7	28.4	30.3	29.6	31.9	30.3	32.6	32.7	32.4	32.3	31.2	27.2	26.1	29.8	31.6
45.0	33.8	32.7	33.2	35.2	32.6	35.4	40.7	41.1	35.6	33.0	36.7	31.2	31.4	33.5	35.1
50.0	31.2	34.0	34.9	37.0	35.2	39.3	36.0	41.0	35.9	35.2	34.4	33.2	34.7	33.3	36.0
55.0	33.5	33.3	33.5	36.2	39.3	41.7	38.7	38.2	40.4	34.7	32.7	31.2	34.0	36.5	38.2
60.0	32.9	33.0	32.6	34.0	40.7	42.0	39.5	39.0	38.9	34.9	32.3	30.1	35.1	38.1	38.7
65.0	34.9	30.5	31.5	33.8	38.8	42.3	40.7	39.2	40.5	34.5	30.7	29.0	35.1	39.5	40.2
70.0	33.7	31.0	31.5	34.0	37.7	43.3	40.0	37.9	40.0	35.5	29.4	28.2	34.9	39.2	39.8
75.0	33.7	31.7	30.7	33.5	37.4	42.2	40.2	37.7	38.4	36.2	28.6	27.2	33.7	39.3	38.2
80.0	32.5	30.7	30.0	33.7	36.5	39.3	39.0	37.7	36.0	36.7	28.0	25.7	34.0	37.2	38.6
85.0	32.1	29.4	29.3	33.3	36.7	39.5	39.7	38.8	36.7	36.8	26.9	25.2	35.0	37.2	38.8
90.0	29.9	28.5	28.2	30.8	35.7	38.6	38.2	37.7	35.4	35.4	25.2	25.4	33.3	36.0	36.0
95.0	30.5	29.1	29.1	31.0	37.2	39.0	40.0	39.3	38.2	38.5	27.1	26.6	34.5	37.5	37.7
100.0	30.1	28.2	28.7	30.0	36.8	39.7	39.7	38.6	38.5	38.6	27.2	25.4	33.7	37.7	37.7
105.0	29.6	27.2	27.5	29.8	36.1	39.2	39.3	38.5	37.5	37.2	27.5	24.6	32.7	37.5	37.0
110.0	27.2	25.4	26.0	28.6	34.2	37.2	37.0	37.7	35.2	35.0	27.2	24.7	30.7	35.9	34.9
115.0	27.7	26.0	26.4	29.4	33.8	36.8	37.5	38.4	35.2	35.0	27.5	27.5	29.3	36.0	34.7
120.0	28.4	26.9	26.6	29.3	33.7	36.0	37.2	37.4	34.2	35.6	28.0	29.4	27.2	35.4	34.9
125.0	28.5	27.2	26.3	28.7	32.4	35.2	35.9	36.0	32.7	34.0	27.5	29.4	26.6	33.2	33.8
130.0	28.2	26.6	27.5	28.9	31.9	34.7	35.2	36.2	32.3	33.5	28.5	29.8	26.3	30.0	32.3
135.0	27.7	26.8	28.2	29.6	30.7	34.9	34.2	35.4	29.6	34.5	29.1	29.4	25.4	26.8	33.0
140.0	23.7	24.4	26.4	28.7	29.6	33.3	32.6	32.3	27.5	31.7	27.7	28.5	25.0	22.4	29.4
145.0	17.0	18.0	21.6	23.5	24.2	27.0	26.1	27.7	19.6	24.0	21.5	25.2	22.6	18.4	21.6
150.0	13.9	13.7	17.5	17.1	17.4	19.5	20.0	21.9	16.5	20.4	20.2	21.4	19.1	16.0	15.2
155.0	5.20	5.20	9.20	8.50	8.50	6.80	7.90	7.30	6.80	8.90	7.20	6.90	7.30	6.10	3.80
160.0	0.70	0.00	1.00	0.40	1.20	0.90	1.00	1.50	0.40	1.50	0.70	1.50	1.10	2.20	0.70
165.0	0.10	0.00	0.10	0.00	0.30	0.00	0.00	0.10	0.00	0.10	0.00	0.00	0.00	0.00	0.00
170.0	0.00	0.00	0.00	0.00	0.00	0.00	0.00	0.00	0.00	0.00	0.00	0.00	0.00	0.00	0.00
175.0	0.00	0.00	0.00	0.00	0.00	0.00	0.00	0.00	0.00	0.00	0.00	0.00	0.00	0.00	0.00
180.0	0.00	0.00	0.00	0.00	0.00	0.00	0.00	0.00	0.00	0.00	0.00	0.00	0.00	0.00	0.00

Test System: LSG-1800
Temperature: 25.3 DEG
Operators: a
Test Date: 12-21-2018
Test Set: 5.0 deg/s C-Gamma (TYPE C)
Humidity: 65.0%
Test Distance: 10.000 m
Remarks:

LUMINOUS DISTRIBUTION INTENSITY DATA
Report number: GO2018 - 324

MANUFACTURER: IDEAL LUX SRL	Address: Via Taglio Destro 32 - Mirano (VE)	
NAME: 201269 LAMPADINA DIAMOND	TYPE: LIGHTBULP	WEIGHT:
SPECIFICATION:	DIMENSION: D120	SERIAL No.:

UNIT: cd

C (DEG) \ γ (DEG)	225	230	235	240	245	250	255	260	265	270	275	280	285	290	295
0.0	7.80	7.70	7.70	7.60	7.60	7.60	7.70	7.60	7.80	7.80	7.80	7.80	7.80	7.70	7.60
5.0	7.80	7.90	7.80	7.90	7.70	7.80	7.80	7.80	7.80	7.90	7.90	8.10	7.90	8.00	7.90
10.0	8.90	9.09	8.80	9.00	8.80	9.09	8.80	8.90	8.60	8.60	8.29	8.60	8.40	8.60	8.60
15.0	10.2	10.4	10.2	10.5	10.4	10.8	10.4	10.5	10.0	10.5	10.1	10.7	10.8	11.5	11.2
20.0	12.9	13.2	11.9	12.0	11.1	11.5	11.5	12.1	12.0	13.0	12.9	14.0	14.1	15.5	15.4
25.0	16.4	17.2	15.6	15.2	14.5	14.5	14.4	16.0	17.0	18.6	18.5	20.0	19.0	20.2	20.1
30.0	21.0	21.9	20.4	19.2	17.8	18.2	17.6	19.2	20.6	22.4	23.5	23.1	21.9	22.9	21.7
35.0	24.2	25.4	23.7	23.7	22.3	21.5	21.6	24.7	24.7	25.4	26.6	26.8	26.4	25.4	23.0
40.0	28.6	29.8	27.1	28.5	26.3	24.9	25.7	25.7	30.1	30.3	30.3	30.0	29.6	32.9	25.4
45.0	33.5	35.2	30.7	29.4	26.8	28.2	28.0	27.1	30.8	32.6	32.9	33.5	31.2	28.5	27.0
50.0	36.2	35.9	30.1	30.1	28.0	30.1	28.2	29.1	30.7	33.1	32.7	37.2	31.7	28.0	27.5
55.0	37.0	36.3	31.9	31.2	30.7	30.0	28.7	30.7	33.5	35.0	35.1	36.1	34.7	28.7	26.8
60.0	36.7	36.3	33.0	31.7	28.7	29.9	29.6	32.0	34.5	36.8	36.5	36.7	36.7	28.2	26.4
65.0	36.7	36.5	33.8	32.4	29.4	29.3	30.4	32.5	34.7	37.7	37.4	38.1	35.6	28.9	25.9
70.0	36.5	36.5	32.9	33.0	30.1	28.7	30.7	32.3	33.8	37.2	36.7	35.4	36.5	28.7	24.6
75.0	35.4	35.6	33.1	35.1	30.0	28.4	29.9	32.4	32.7	36.5	35.7	35.2	36.3	28.7	24.5
80.0	35.2	36.0	34.0	34.0	29.1	28.9	30.4	32.0	33.5	36.0	36.0	36.7	36.7	28.4	24.9
85.0	36.2	36.7	34.2	32.6	29.0	27.5	30.1	30.0	34.4	35.2	35.2	35.7	35.2	26.9	24.2
90.0	35.2	35.9	33.8	31.4	27.9	27.5	29.4	30.4	33.3	36.5	36.2	37.4	37.0	28.7	25.7
95.0	37.2	36.8	35.0	31.9	28.2	27.2	29.0	29.9	33.0	36.7	36.5	37.2	36.3	28.2	27.1
100.0	37.2	36.5	35.5	31.7	27.7	26.3	28.7	28.6	32.7	36.2	36.7	36.2	36.0	27.9	28.0
105.0	36.7	35.4	34.7	31.2	27.1	24.7	27.2	26.6	30.7	33.3	34.7	33.3	33.5	26.4	27.5
110.0	36.0	34.0	33.7	29.4	24.5	23.5	26.4	24.7	28.5	32.3	34.0	32.1	33.0	25.9	29.3
115.0	36.1	33.5	34.5	29.6	25.0	23.4	25.7	24.2	28.2	31.6	33.2	30.7	32.2	25.7	30.1
120.0	35.5	32.2	34.0	29.3	24.5	22.7	24.9	23.1	26.4	30.5	31.6	28.2	31.0	25.4	30.0
125.0	33.3	30.1	34.0	29.1	24.1	22.7	25.2	22.1	24.0	28.7	30.5	26.9	29.1	24.7	29.3
130.0	32.1	29.4	33.0	28.5	23.2	21.6	24.6	22.5	22.7	26.4	29.1	24.5	26.4	24.5	28.6
135.0	31.0	28.0	30.8	26.6	20.8	20.2	22.7	20.5	19.7	24.2	26.6	22.2	22.7	23.1	26.1
140.0	29.6	25.2	26.6	24.2	18.0	16.6	19.3	17.2	16.1	16.1	20.0	16.5	16.7	19.3	23.1
145.0	25.7	21.1	21.9	18.7	10.7	11.5	11.8	11.8	12.3	14.0	19.7	13.5	12.5	14.0	16.6
150.0	18.9	15.2	12.5	9.40	5.30	7.20	5.60	5.80	7.10	7.80	9.60	8.29	9.09	11.0	9.40
155.0	6.80	4.90	6.60	4.30	1.80	1.70	1.50	2.10	3.30	2.50	2.50	2.00	2.70	1.60	2.70
160.0	1.70	0.80	1.60	0.80	1.70	0.30	0.50	0.00	0.40	0.00	1.40	0.40	1.00	0.20	0.50
165.0	0.00	0.00	0.00	0.00	0.00	0.00	0.00	0.00	0.00	0.00	0.00	0.00	0.00	0.00	0.00
170.0	0.00	0.00	0.00	0.00	0.00	0.00	0.00	0.00	0.00	0.00	0.00	0.00	0.00	0.00	0.00
175.0	0.00	0.00	0.00	0.00	0.00	0.00	0.00	0.00	0.00	0.00	0.00	0.00	0.00	0.00	0.00
180.0	0.00	0.00	0.00	0.00	0.00	0.00	0.00	0.00	0.00	0.00	0.00	0.00	0.00	0.00	0.00

Test System: LSG-1800
Temperature: 25.3DEG
Operators: a
Test Date: 12-21-2018
Test Set: 5.0deg/s C-Gamma (TYPE C)
Humidity: 65.0%
Test Distance: 10.000 m
Remarks:

LUMINOUS DISTRIBUTION INTENSITY DATA

Report number: GO2018 - 324

MANUFACTURER: IDEAL LUX SRL	Address: Via Taglio Destro 32 - Mirano (VE)	
NAME: 201269 LAMPADINA DIAMOND	TYPE: LIGHTBULP	WEIGHT:
SPECIFICATION:	DIMENSION: D120	SERIAL No.:

UNIT: cd

C (DEG) \ γ (DEG)	300	305	310	315	320	325	330	335	340	345	350	355
0.0	7.70	7.70	7.80	7.80	7.70	7.70	7.70	7.50	7.60	7.60	7.70	7.80
5.0	8.10	8.00	8.20	8.10	8.20	8.20	8.20	8.10	8.20	8.40	8.70	8.80
10.0	9.00	8.70	8.70	8.40	8.50	8.40	8.80	9.00	9.50	9.90	10.5	10.7
15.0	11.4	11.1	11.1	10.3	10.9	10.5	10.8	10.2	10.7	11.3	12.1	12.2
20.0	16.4	15.7	16.1	15.8	14.3	12.8	13.0	12.7	13.0	12.8	14.1	14.4
25.0	20.9	20.6	21.6	21.2	21.2	20.1	19.5	17.4	16.9	16.2	17.5	17.6
30.0	22.5	24.1	25.7	23.9	24.5	22.3	22.6	20.4	20.2	19.7	22.5	22.6
35.0	24.5	26.4	27.9	29.8	29.4	25.9	26.1	24.5	25.0	23.1	25.5	25.7
40.0	28.2	29.6	31.9	30.7	32.1	30.1	28.7	28.7	28.7	26.6	28.4	31.4
45.0	30.5	32.4	35.2	33.1	34.5	32.4	30.5	26.4	30.3	29.4	30.5	32.7
50.0	32.7	34.2	36.0	37.2	35.5	33.3	32.5	29.1	29.1	30.5	36.0	38.0
55.0	34.2	36.3	38.2	39.0	36.5	34.5	33.8	29.6	29.1	30.8	39.5	41.4
60.0	34.9	37.2	38.7	39.3	38.1	35.1	32.1	29.3	29.1	31.7	37.5	42.2
65.0	35.1	38.2	38.8	38.2	38.9	35.5	32.0	29.4	28.7	31.9	36.7	43.2
70.0	33.7	38.1	37.4	36.2	38.0	34.4	31.9	29.3	27.4	31.6	36.0	40.5
75.0	33.0	37.4	36.7	35.6	37.2	34.0	30.7	28.9	26.8	31.4	35.9	38.6
80.0	33.0	37.5	37.5	36.5	37.5	34.5	30.3	28.2	26.4	31.7	35.4	39.7
85.0	30.8	37.0	36.1	36.0	35.4	33.8	29.1	27.2	26.9	30.3	34.5	38.2
90.0	32.2	38.5	37.5	37.5	36.8	35.6	29.4	27.7	27.1	29.4	34.7	38.1
95.0	31.2	38.1	37.9	37.2	36.0	35.1	28.7	27.0	26.0	29.1	32.6	37.9
100.0	30.3	37.9	37.4	37.0	35.5	34.5	28.2	26.0	25.0	27.9	31.9	36.0
105.0	28.0	35.7	35.1	34.7	34.4	32.7	26.1	24.1	23.8	27.0	29.6	33.5
110.0	26.8	35.2	35.2	34.5	34.5	33.2	27.0	25.2	24.2	27.5	30.0	35.1
115.0	24.6	33.8	34.5	33.7	33.8	33.0	27.1	25.2	23.7	27.7	29.1	36.3
120.0	22.6	32.0	33.5	31.5	32.0	32.0	26.8	24.5	23.0	27.2	28.0	37.5
125.0	21.2	29.8	32.0	29.4	30.7	31.6	25.7	24.0	23.4	26.9	26.9	38.1
130.0	19.5	27.2	30.3	28.6	29.4	30.0	24.1	22.2	23.5	26.1	25.0	36.1
135.0	16.9	23.1	27.5	26.4	25.2	27.7	20.7	20.4	20.7	24.6	21.6	30.1
140.0	15.6	19.6	23.2	23.1	20.2	24.2	14.8	15.9	17.8	21.6	17.4	23.2
145.0	12.8	13.5	13.9	17.7	14.0	17.0	9.80	10.8	13.4	14.5	11.4	12.5
150.0	5.10	6.80	5.90	6.90	6.90	11.1	4.70	3.70	9.00	10.0	7.90	7.80
155.0	1.30	1.60	1.20	3.30	3.90	2.10	1.00	1.50	1.70	2.30	0.80	2.40
160.0	0.00	0.80	0.00	0.30	0.20	0.40	0.00	0.60	0.80	0.80	0.60	0.00
165.0	0.00	0.00	0.00	0.00	0.00	0.00	0.00	0.00	0.00	0.00	0.00	0.00
170.0	0.00	0.00	0.00	0.00	0.00	0.00	0.00	0.00	0.00	0.00	0.00	0.00
175.0	0.00	0.00	0.00	0.00	0.00	0.00	0.00	0.00	0.00	0.00	0.00	0.00
180.0	0.00	0.00	0.00	0.00	0.00	0.00	0.00	0.00	0.00	0.00	0.00	0.00

Test System:LSG-1800
Temperature:25.3DEG
Operators:a
Test Date:12-21-2018

Test Set: 5.0deg/s C-Gamma (TYPE C)
Humidity:65.0%
Test Distance:10.000 m
Remarks: