

LUMINAIRE PHOTOMETRIC TEST REPORT

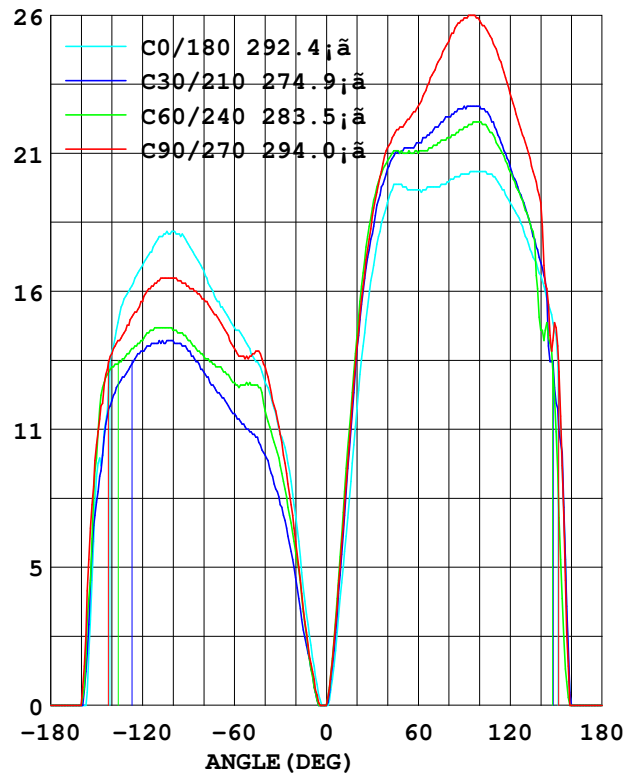
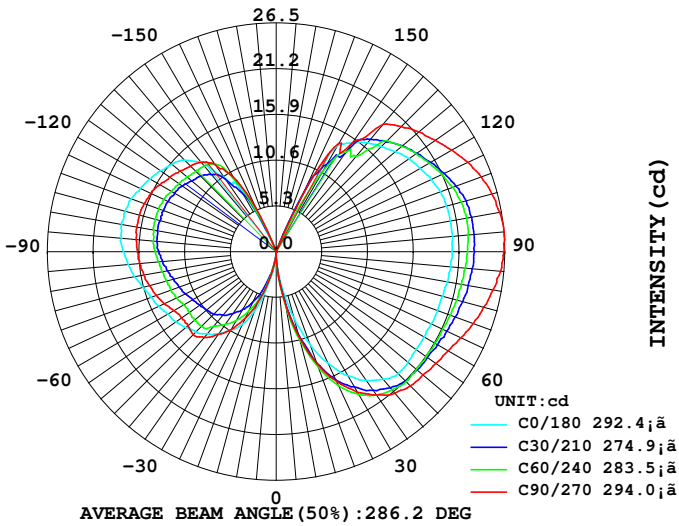
Report number:

MANUFACTURER: IDEAL LUX SRL	Address:	
NAME: 204468 LAMPADINA VINTAGE E27	TYPE: LIGHTBULP	WEIGHT:
SPECIFICATION:	DIMENSION: D120	SERIAL No.:

DATA OF LAMP		Imax (cd)	26.90	S/MH (C0/180)	0.00
MODEL	204468 LAMPADINA VINTAGE (E27)	EFFICIENCY (%)	100.0	S/MH (C90/270)	0.00
NOMINAL POWER (W)	4	TOTAL FLUX (lm)	189.32	Voltage (V)	229.1
RATED VOLTAGE (V)	230	EFFICIENCY (lm/W)	47.4	Current (A)	0.038
NOMINAL FLUX (lm)	189.3	η up (%)	49.3	Power (W)	3.990
LAMPS QUANTITY	1	η down (%)	50.7	Power Factor (PF)	0.455
TEST VOLTAGE (V)	229.1	Effective Flux (lm)	189.1	EEL	0.205

LUMINOUS INTENSITY DISTRIBUTION

LUMINOUS INTENSITY DISTRIBUTION



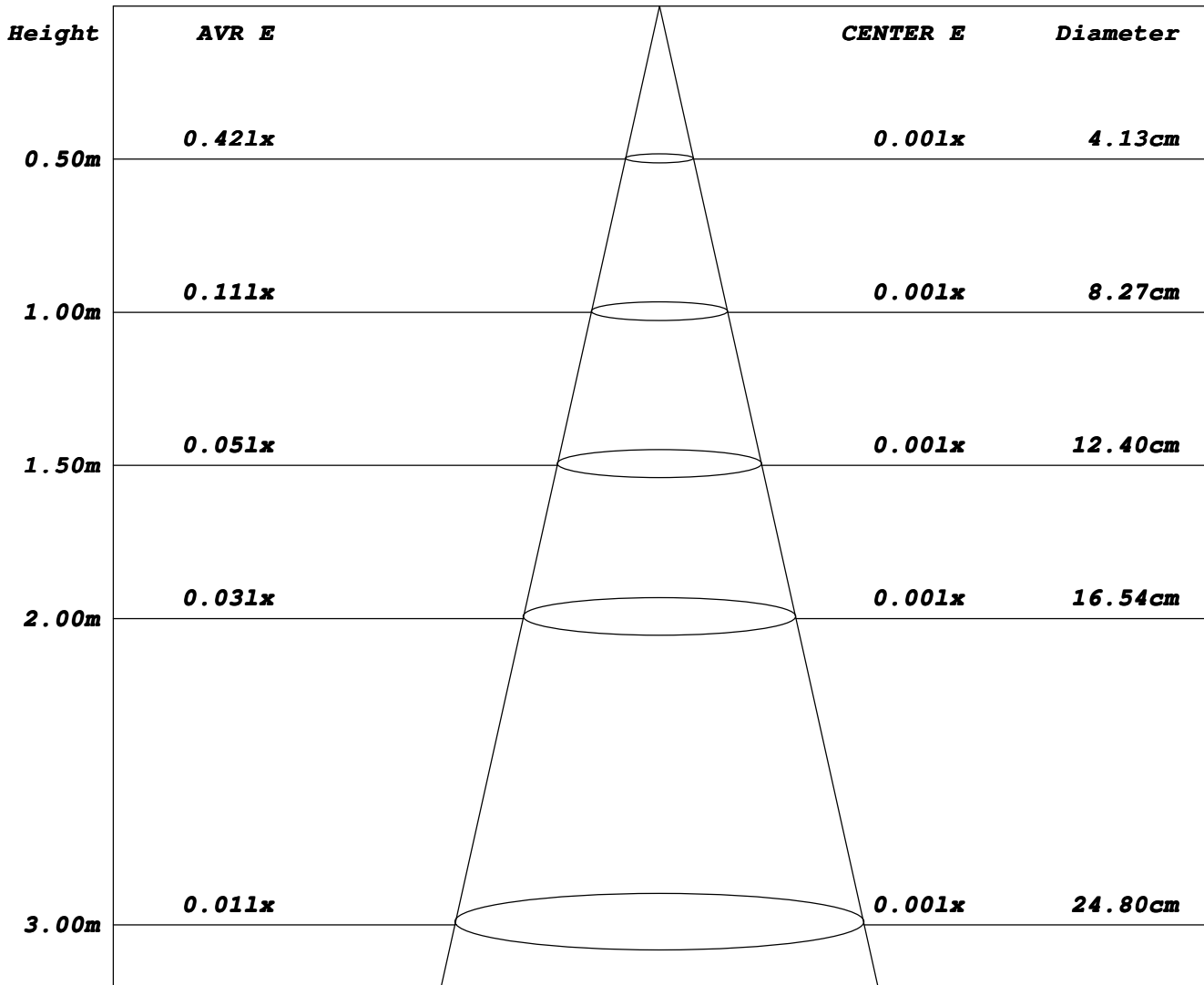
Test System: LSG-1800
 Temperature: 25.3 DEG
 Operators: A
 Test Date: 12-19-2018

Test Set: 5.0 deg/s C-Gamma (TYPE C)
 Humidity: 65.0%
 Test Distance: 10.000 m
 Remarks:

AVERAGE AND CENTER E Figure

Report number:

MANUFACTURER: IDEAL LUX SRL	Address:	
NAME: 204468 LAMPADINA VINTAGE E27	TYPE: LIGHTBULP	WEIGHT:
SPECIFICATION:	DIMENSION: D120	SERIAL No.:



Angle: 4.7deg

Test System: LSG-1800
 Temperature: 25.3DEG
 Operators: A
 Test Date: 12-19-2018

Test Set: 5.0deg/s C-Gamma (TYPE C)
 Humidity: 65.0%
 Test Distance: 10.000 m
 Remarks:

ZONAL FLUX DIAGRAM

Report number:

MANUFACTURER: IDEAL LUX SRL	Address:	
NAME: 204468 LAMPADINA VINTAGE E27	TYPE: LIGHTBULP	WEIGHT:
SPECIFICATION:	DIMENSION: D120	SERIAL No.:

γ	C0	C45	C90	C135	C180	C225	C270	C315	γ	zone	total
5.0	0.400	0	0.100	0.700	1.500	2.000	2.400	1.300	0- 5	0.013	0.013
10.0	2.300	1.300	1.600	3.100	4.700	5.800	6.200	4.100	5- 10	0.171	0.183
15.0	4.500	3.400	3.700	5.900	7.900	9.900	10.10	7.200	10- 15	0.597	0.780
20.0	7.300	6.100	6.300	8.600	11.40	14.40	13.79	10.59	15- 20	1.300	2.080
25.0	9.300	8.299	8.500	11.50	14.30	17.29	16.59	12.70	20- 25	2.187	4.268
30.0	10.40	9.900	10.40	13.50	16.59	19.60	18.79	14.30	25- 30	3.117	7.386
35.0	11.59	11.00	11.70	15.00	18.19	21.10	20.29	15.00	30- 35	4.031	11.41
40.0	12.40	12.10	13.00	15.90	19.30	21.90	21.40	15.60	35- 40	4.903	16.32
45.0	13.20	13.09	13.60	16.50	20.00	22.50	22.00	16.10	40- 45	5.718	22.03
50.0	13.70	13.09	13.40	16.59	19.90	22.70	22.20	16.40	45- 50	6.360	28.39
55.0	14.20	13.20	13.40	16.50	19.79	23.10	22.60	16.90	50- 55	6.867	35.26
60.0	14.50	13.50	13.70	16.50	19.79	23.29	23.00	17.40	55- 60	7.352	42.61
65.0	15.00	13.70	14.30	16.69	19.79	23.60	23.60	18.00	60- 65	7.847	50.46
70.0	15.50	13.90	14.80	16.90	19.90	24.00	24.29	18.70	65- 70	8.334	58.80
75.0	16.00	14.00	15.20	17.20	20.00	24.29	24.90	19.30	70- 75	8.767	67.56
80.0	16.69	14.30	15.60	17.50	20.10	24.50	25.50	20.00	75- 80	9.146	76.71
85.0	17.20	14.59	15.90	17.90	20.29	24.79	26.10	20.70	80- 85	9.477	86.19
90.0	17.70	15.00	16.10	18.29	20.40	24.90	26.40	21.19	85- 90	9.730	95.92
95.0	18.00	15.20	16.30	18.70	20.50	25.09	26.49	21.60	90- 95	9.876	105.8
100.0	18.19	15.29	16.40	18.90	20.50	25.09	26.30	21.79	95-100	9.878	115.6
105.0	18.09	15.29	16.40	19.10	20.40	25.00	25.90	21.79	100-105	9.731	125.4
110.0	17.90	15.09	16.30	19.10	20.29	24.69	25.29	21.60	105-110	9.433	134.8
115.0	17.40	14.80	16.00	19.00	19.79	24.10	24.50	21.19	110-115	8.998	143.8
120.0	16.90	14.30	15.50	18.70	19.30	23.29	23.50	20.70	115-120	8.453	152.2
125.0	16.40	13.90	15.09	18.00	18.79	22.50	22.50	20.00	120-125	7.820	160.1
130.0	15.80	13.50	14.59	17.10	18.00	21.50	21.60	19.30	125-130	7.104	167.2
135.0	15.00	13.40	14.00	16.10	17.20	20.60	20.50	18.29	130-135	6.333	173.5
140.0	13.60	12.80	13.50	14.90	16.50	18.40	19.30	16.79	135-140	5.481	179.0
145.0	10.50	11.80	12.30	13.50	15.40	14.90	15.40	12.00	140-145	4.481	183.5
150.0	8.800	10.30	10.00	9.099	14.20	16.90	14.50	8.900	145-150	3.396	186.9
155.0	2.000	4.000	5.600	1.800	7.400	9.500	7.300	7.300	150-155	1.993	188.9
160.0	0	0	0	0	0	0.300	0	0	155-160	0.417	189.3
165.0	0	0	0	0	0	0	0	0	160-165	0.000	189.3
170.0	0	0	0	0	0	0	0	0	165-170	0	189.3
175.0	0	0	0	0	0	0	0	0	170-175	0	189.3
180.0	0	0	0	0	0	0	0	0	175-180	0	189.3
DEG	LUMINOUS INTENSITY: cd									UNIT: lm	

Test System: LSG-1800
Temperature: 25.3 DEG
Operators: A
Test Date: 12-19-2018

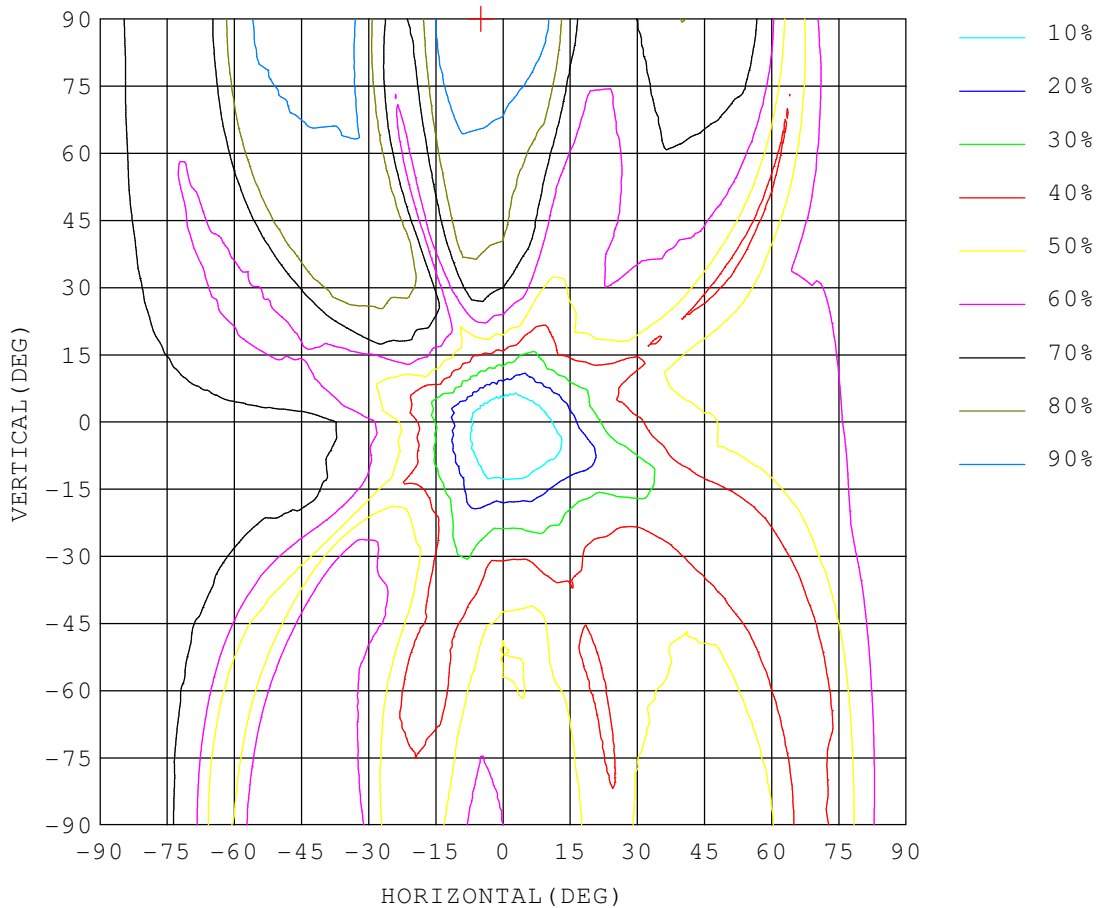
Test Set: 5.0 deg/s C-Gamma (TYPE C)
Humidity: 65.0%
Test Distance: 10.000 m
Remarks:

ISOCANDELA DIAGRAM

Report number:

MANUFACTURER: IDEAL LUX SRL	Address:	
NAME: 204468 LAMPADINA VINTAGE E27	TYPE: LIGHTBULP	WEIGHT:
SPECIFICATION:	DIMENSION: D120	SERIAL No.:

UNIT: cd



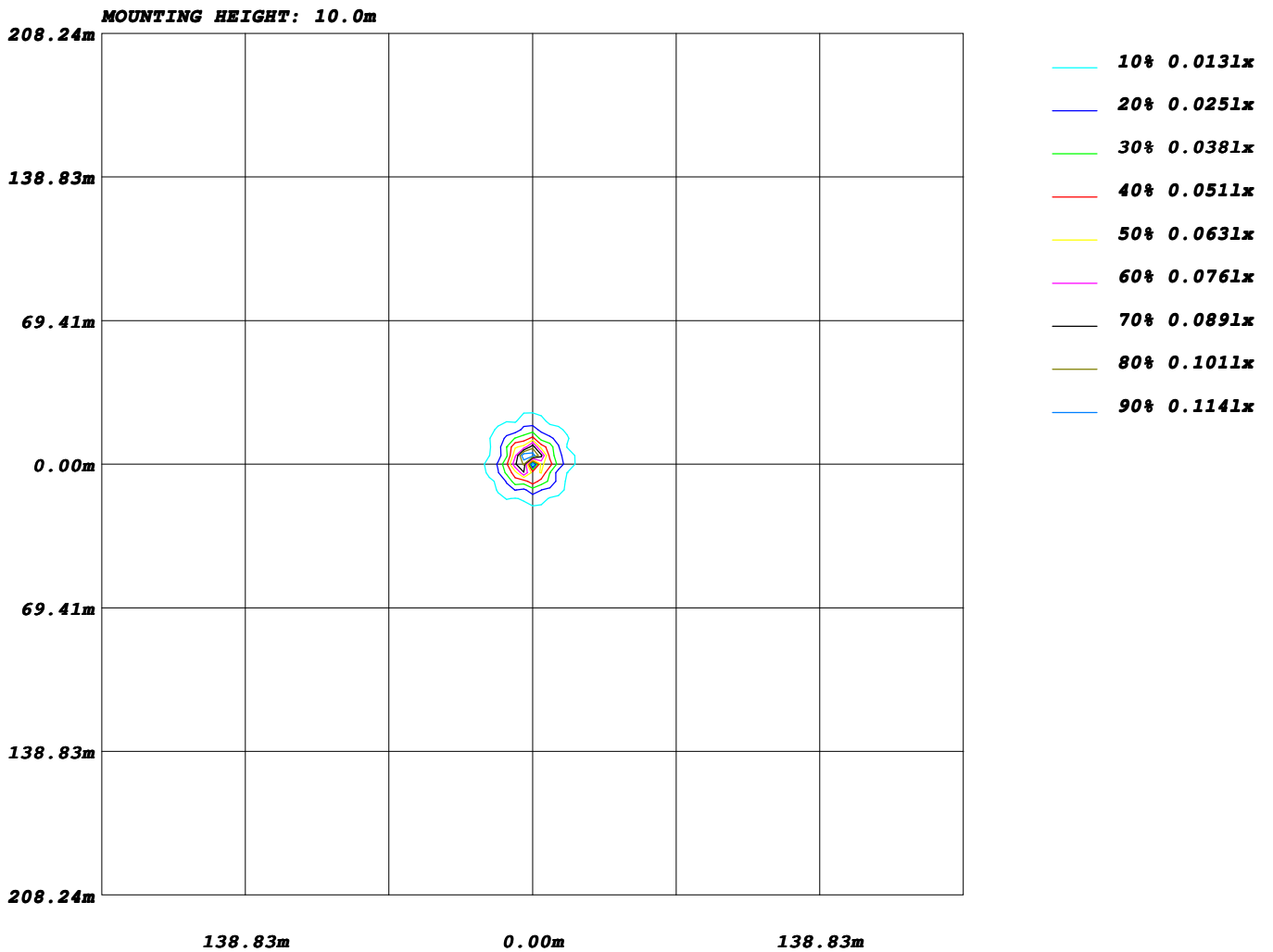
Test System: LSG-1800
Temperature: 25.3DEG
Operators: A
Test Date: 12-19-2018

Test Set: 5.0deg/s C-Gamma (TYPE C)
Humidity: 65.0%
Test Distance: 10.000 m
Remarks:

ISOLUX DIAGRAM

Report number:

MANUFACTURER: IDEAL LUX SRL	Address:	
NAME: 204468 LAMPADINA VINTAGE E27	TYPE: LIGHTBULP	WEIGHT:
SPECIFICATION:	DIMENSION: D120	SERIAL No.:



Test System: LSG-1800
 Temperature: 25.3DEG
 Operators: A
 Test Date: 12-19-2018

Test Set: 5.0deg/s C-Gamma (TYPE C)
 Humidity: 65.0%
 Test Distance: 10.000 m
 Remarks:

AREA LUMINOUS FLUX

Report number:

MANUFACTURER: IDEAL LUX SRL	Address:	
NAME: 204468 LAMPADINA VINTAGE E27	TYPE: LIGHTBULP	WEIGHT:
SPECIFICATION:	DIMENSION: D120	SERIAL No.:

		AREA FLUX DIAGRAM																UNIT: lm		Φ_t	Φ_a												
VERTICAL (DEG)	90	0.05	0.13	0.25	0.42	0.53	0.61	0.52	0.68	0.80	0.76	0.58	0.48	0.50	0.45	0.33	0.17	0.14	0.05	7.43	7.43												
	80	0.05	0.13	0.24	0.41	0.53	0.60	0.51	0.66	0.76	0.72	0.55	0.46	0.48	0.43	0.31	0.17	0.14	0.05	7.18	7.18												
	70	0.05	0.13	0.23	0.40	0.52	0.60	0.52	0.62	0.73	0.68	0.50	0.44	0.46	0.40	0.29	0.16	0.13	0.05	6.90	6.90												
	60	0.05	0.13	0.22	0.38	0.51	0.59	0.55	0.58	0.70	0.63	0.46	0.43	0.44	0.38	0.25	0.17	0.13	0.05	6.64	6.64												
	50	0.05	0.13	0.21	0.34	0.49	0.58	0.60	0.54	0.67	0.59	0.43	0.44	0.42	0.34	0.21	0.19	0.13	0.05	6.42	6.42												
	40	0.05	0.13	0.21	0.30	0.45	0.56	0.62	0.53	0.63	0.53	0.42	0.45	0.40	0.29	0.21	0.20	0.13	0.05	6.14	6.14												
	30	0.05	0.14	0.21	0.28	0.38	0.51	0.58	0.53	0.51	0.42	0.39	0.41	0.35	0.25	0.25	0.20	0.13	0.05	5.63	5.63												
		0.05	0.15	0.22	0.28	0.35	0.40	0.46	0.44	0.33	0.26	0.32	0.32	0.29	0.30	0.26	0.20	0.13	0.05	4.80	4.80												
		0.05	0.15	0.24	0.32	0.38	0.39	0.35	0.26	0.12	0.09	0.18	0.27	0.31	0.29	0.25	0.19	0.13	0.05	4.03	4.00												
		0.05	0.16	0.25	0.35	0.43	0.45	0.39	0.23	0.06	0.03	0.11	0.21	0.26	0.27	0.24	0.19	0.12	0.05	3.85	3.78												
		0.05	0.16	0.25	0.34	0.41	0.42	0.35	0.27	0.13	0.13	0.19	0.21	0.21	0.22	0.20	0.18	0.12	0.04	3.87	3.85												
	-30	0.05	0.16	0.25	0.32	0.35	0.36	0.41	0.31	0.23	0.25	0.27	0.30	0.26	0.20	0.17	0.16	0.12	0.04	4.22	4.22												
	-40	0.05	0.15	0.24	0.28	0.30	0.42	0.43	0.31	0.31	0.35	0.32	0.35	0.32	0.24	0.17	0.14	0.11	0.04	4.53	4.53												
	-50	0.05	0.15	0.23	0.24	0.34	0.41	0.41	0.31	0.38	0.41	0.34	0.35	0.33	0.27	0.18	0.13	0.10	0.04	4.68	4.68												
	-60	0.05	0.15	0.21	0.24	0.36	0.41	0.36	0.31	0.41	0.41	0.35	0.33	0.33	0.29	0.21	0.13	0.10	0.04	4.69	4.69												
	-70	0.05	0.15	0.19	0.26	0.37	0.41	0.34	0.32	0.44	0.42	0.38	0.32	0.34	0.30	0.23	0.13	0.09	0.04	4.79	4.79												
-80	0.05	0.15	0.18	0.28	0.38	0.41	0.34	0.34	0.47	0.45	0.40	0.32	0.35	0.31	0.25	0.14	0.09	0.04	4.94	4.94													
-90	0.05	0.15	0.18	0.29	0.39	0.42	0.34	0.37	0.49	0.46	0.42	0.32	0.36	0.32	0.26	0.15	0.09	0.04	5.10	5.10													
		-90	-80	-70	-60	-50	-40	-30	-20	HORIZONTAL (DEG)																20	30	40	50	60	70	80	90
Φ_t		0.94	2.60	4.01	5.72	7.44	8.55	8.07	7.62	8.15	7.61	6.60	6.39	6.40	5.56	4.26	2.99	2.13	0.81	189													
Φ_a		0.94	2.60	4.01	5.72	7.44	8.55	8.07	7.62	8.11	7.55	6.59	6.39	6.40	5.56	4.26	2.99	2.13	0.81		189												

Test System: LSG-1800
Temperature: 25.3DEG
Operators: A
Test Date: 12-19-2018

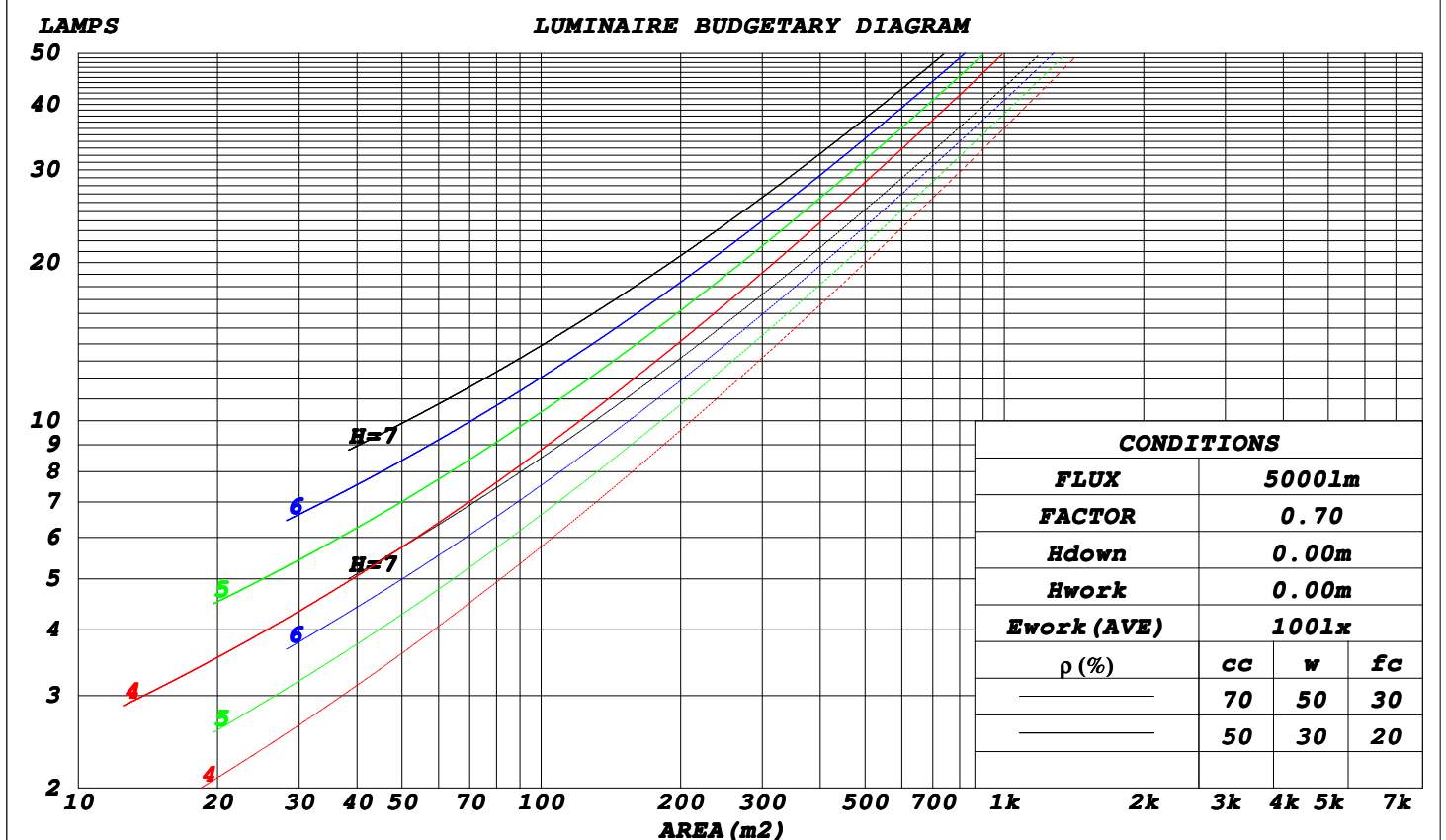
Test Set: 5.0deg/s C-Gamma (TYPE C)
Humidity: 65.0%
Test Distance: 10.000 m
Remarks:

CU AND LUMINAIRE BUDGETARY ESTIMATE DIAGRAM

Report number:

MANUFACTURER: IDEAL LUX SRL				Address:							
NAME: 204468 LAMPADINA VINTAGE E27				TYPE: LIGHTBULP				WEIGHT:			
SPECIFICATION:				DIMENSION: D120				SERIAL No.:			

ρ_{cc}	80%			70%			50%			30%			10%			0
ρ_w	50%	30%	10%	50%	30%	10%	50%	30%	10%	50%	30%	10%	50%	30%	10%	0
ρ_{fc}	20%			20%			20%			20%			20%			0
RCR	RCR: Room Cavity Ratio						Coefficients of Utilization (CU)									
0.0	1.07	1.07	1.07	.99	.99	.99	.84	.84	.84	.70	.70	.70	.57	.57	.57	.51
1.0	.86	.81	.75	.79	.74	.69	.66	.62	.58	.53	.50	.48	.42	.40	.38	.32
2.0	.73	.64	.58	.66	.59	.53	.55	.49	.44	.44	.40	.36	.34	.31	.28	.23
3.0	.62	.53	.46	.57	.49	.42	.47	.40	.35	.37	.32	.28	.29	.25	.22	.17
4.0	.54	.44	.37	.49	.41	.34	.41	.34	.28	.32	.27	.23	.25	.21	.17	.13
5.0	.47	.38	.31	.43	.35	.28	.36	.29	.24	.28	.23	.19	.22	.18	.14	.11
6.0	.42	.33	.26	.38	.30	.24	.32	.25	.20	.25	.20	.16	.19	.15	.12	.09
7.0	.37	.28	.22	.34	.26	.20	.28	.22	.17	.23	.17	.13	.17	.13	.10	.07
8.0	.34	.25	.19	.31	.23	.18	.26	.19	.15	.20	.15	.12	.16	.12	.09	.06
9.0	.31	.22	.17	.28	.20	.15	.23	.17	.13	.19	.14	.10	.14	.10	.08	.05
10.0	.28	.20	.15	.25	.18	.13	.21	.15	.11	.17	.12	.09	.13	.09	.07	.04



Test System: LSG-1800
Temperature: 25.3DEG
Operators: A
Test Date: 12-19-2018

Test Set: 5.0deg/s C-Gamma (TYPE C)
Humidity: 65.0%
Test Distance: 10.000 m
Remarks:

WEC AND CCEC

Report number:

MANUFACTURER: IDEAL LUX SRL			Address:		
NAME: 204468 LAMPADINA VINTAGE E27			TYPE: LIGHTBULP		WEIGHT:
SPECIFICATION:			DIMENSION: D120		SERIAL No.:

ρ_{cc}	80%			70%			50%			30%			10%			0
ρ_w	50%	30%	10%	50%	30%	10%	50%	30%	10%	50%	30%	10%	50%	30%	10%	0
ρ_{fc}	20%			20%			20%			20%			20%			0
RCR	RCR:Room Cavity Ratio						Wall Exitance Coefficients (WEC)									
0.0																
1.0	.419	.238	.076	.397	.226	.072	.355	.204	.065	.317	.183	.059	.282	.163	.053	
2.0	.348	.191	.059	.328	.181	.056	.290	.161	.050	.255	.143	.045	.222	.126	.040	
3.0	.303	.161	.048	.285	.152	.046	.250	.135	.041	.218	.119	.037	.188	.104	.032	
4.0	.270	.140	.041	.253	.132	.039	.221	.117	.035	.191	.102	.031	.163	.089	.027	
5.0	.243	.124	.036	.227	.117	.034	.198	.103	.030	.171	.090	.027	.145	.077	.023	
6.0	.221	.111	.032	.207	.105	.030	.180	.092	.027	.154	.080	.024	.131	.069	.020	
7.0	.203	.100	.028	.190	.095	.027	.165	.083	.024	.141	.072	.021	.119	.062	.018	
8.0	.188	.092	.026	.175	.086	.024	.152	.076	.022	.130	.066	.019	.109	.056	.016	
9.0	.174	.084	.024	.163	.079	.022	.141	.070	.020	.121	.061	.017	.101	.052	.015	
10.0	.163	.078	.022	.152	.073	.021	.132	.065	.018	.113	.056	.016	.094	.048	.014	

ρ_{cc}	80%			70%			50%			30%			10%			0
ρ_w	50%	30%	10%	50%	30%	10%	50%	30%	10%	50%	30%	10%	50%	30%	10%	0
ρ_{fc}	20%			20%			20%			20%			20%			0
RCR	RCR:Room Cavity Ratio						Ceiling Cavity Exitance Coefficients (CCEC)									
0.0	.566	.566	.566	.484	.484	.484	.330	.330	.330	.190	.190	.190	.061	.061	.061	
1.0	.567	.534	.505	.485	.459	.434	.332	.315	.300	.191	.183	.175	.061	.059	.056	
2.0	.561	.513	.473	.481	.442	.409	.330	.306	.285	.190	.178	.167	.061	.058	.054	
3.0	.555	.498	.453	.475	.430	.393	.326	.299	.276	.188	.174	.162	.061	.057	.053	
4.0	.547	.487	.441	.470	.421	.383	.323	.293	.270	.187	.172	.159	.060	.056	.052	
5.0	.540	.478	.432	.464	.413	.376	.319	.289	.265	.185	.170	.157	.060	.055	.052	
6.0	.533	.470	.426	.458	.407	.371	.316	.285	.262	.183	.168	.156	.059	.055	.052	
7.0	.526	.464	.421	.452	.403	.367	.313	.282	.260	.182	.166	.155	.059	.054	.051	
8.0	.519	.459	.418	.447	.398	.364	.309	.280	.259	.180	.165	.154	.058	.054	.051	
9.0	.513	.455	.415	.442	.395	.362	.306	.277	.257	.178	.164	.153	.058	.054	.051	
10.0	.508	.451	.413	.438	.392	.361	.304	.276	.256	.177	.163	.153	.057	.054	.051	

Test System: LSG-1800
Temperature: 25.3 DEG
Operators: A
Test Date: 12-19-2018

Test Set: 5.0 deg/s C-Gamma (TYPE C)
Humidity: 65.0%
Test Distance: 10.000 m
Remarks:

Uncorrected UGR Table

Report number:

MANUFACTURER: IDEAL LUX SRL	Address:	
NAME: 204468 LAMPADINA VINTAGE E27	TYPE:LIGHTBULP	WEIGHT:
SPECIFICATION:	DIMENSION: D120	SERIAL No.:

ceiling/cavity	0.7	0.7	0.5	0.5	0.3	0.7	0.7	0.5	0.5	0.3
walls	0.5	0.3	0.5	0.3	0.3	0.5	0.3	0.5	0.3	0.3
working plane	0.2	0.2	0.2	0.2	0.2	0.2	0.2	0.2	0.2	0.2
Room dimensions	Viewed crosswise					Viewed endwise				
x = 2H y = 2H	2.7	3.8	3.5	4.7	5.8	3.3	4.4	4.2	5.3	6.5
3H	6.3	7.3	7.1	8.2	9.4	6.9	7.9	7.8	8.8	10.0
4H	8.5	9.5	9.4	10.4	11.6	9.0	9.9	9.9	10.9	12.1
6H	11.1	12.0	12.0	13.0	14.2	11.2	12.1	12.2	13.1	14.3
8H	12.6	13.5	13.5	14.4	15.6	12.5	13.4	13.4	14.3	15.5
12H	14.2	15.0	15.1	16.0	17.2	13.9	14.7	14.8	15.7	16.9
4H 2H	4.0	5.0	4.9	5.9	7.1	4.4	5.4	5.3	6.3	7.5
3H	7.4	8.2	8.3	9.2	10.4	7.8	8.7	8.8	9.6	10.9
4H	9.4	10.2	10.4	11.1	12.4	9.9	10.6	10.8	11.6	12.9
6H	11.9	12.6	12.9	13.6	14.8	12.3	13.0	13.3	14.0	15.2
8H	13.4	14.1	14.4	15.1	16.4	13.7	14.4	14.7	15.4	16.7
12H	15.3	15.9	16.3	16.9	18.2	15.3	15.9	16.3	16.9	18.2
8H 4H	10.3	11.0	11.3	12.0	13.2	10.6	11.3	11.6	12.3	13.6
6H	12.9	13.4	13.9	14.4	15.8	13.2	13.7	14.2	14.7	16.1
8H	14.3	14.8	15.4	15.9	17.2	14.7	15.1	15.7	16.2	17.5
12H	16.2	16.6	17.2	17.6	19.0	16.4	16.9	17.5	17.9	19.2
12H 4H	10.5	11.1	11.5	12.1	13.4	10.8	11.4	11.8	12.4	13.7
6H	13.3	13.8	14.3	14.8	16.1	13.5	14.0	14.5	15.0	16.4
8H	14.9	15.3	15.9	16.3	17.7	15.1	15.5	16.1	16.6	17.9

Variations with the observer position at spacings:

S = 1.0H	+ 0.1 / - 0.1	+ 0.1 / - 0.1
1.5H	+ 0.2 / - 0.2	+ 0.3 / - 0.2
2.0H	+ 0.3 / - 0.3	+ 0.3 / - 0.3

CIE Pub.117 Corrected 189.3 lm Total Lamp Luminous Flux. (8log(F/F0) = -5.8)

Test System:LSG-1800
 Temperature:25.3DEG
 Operators:A
 Test Date:12-19-2018

Test Set: 5.0deg/s C-Gamma (TYPE C)
 Humidity:65.0%
 Test Distance:10.000 m
 Remarks:

UTILIZATION FACTORS TABLE

Report number:

MANUFACTURER: IDEAL LUX SRL	Address:	
NAME: 204468 LAMPADINA VINTAGE E27	TYPE: LIGHTBULP	WEIGHT:
SPECIFICATION:	DIMENSION: D120	SERIAL No.:

REFLECTANCE										
Ceiling	0.8	0.8	0.8	0.7	0.7	0.7	0.5	0.5	0.5	0
Walls	0.7	0.5	0.3	0.7	0.5	0.3	0.7	0.5	0.3	0
Working plane	0.2	0.2	0.2	0.2	0.2	0.2	0.2	0.2	0.2	0
ROOM INDEX	UTILIZATION FACTORS (PERCENT) $k(RI) \times RCR = 5$									
$k = 0.60$	35	22	15	33	21	14	30	19	13	6
0.80	44	30	21	41	28	20	36	25	18	9
1.00	51	36	27	48	34	26	41	32	23	12
1.25	58	43	34	54	41	32	46	36	28	15
1.50	63	49	39	59	46	37	50	40	32	17
2.00	71	58	48	66	54	45	56	47	39	21
2.50	76	64	54	70	59	51	60	51	44	24
3.00	80	69	60	74	64	56	63	55	48	27
4.00	85	76	68	79	70	63	67	60	54	30
5.00	89	80	73	82	74	68	69	63	58	33
ROOM INDEX	UF(total)									Direct
According to DIN EN 13032-2 2004			Suspended				SHRNOM = 1.25			

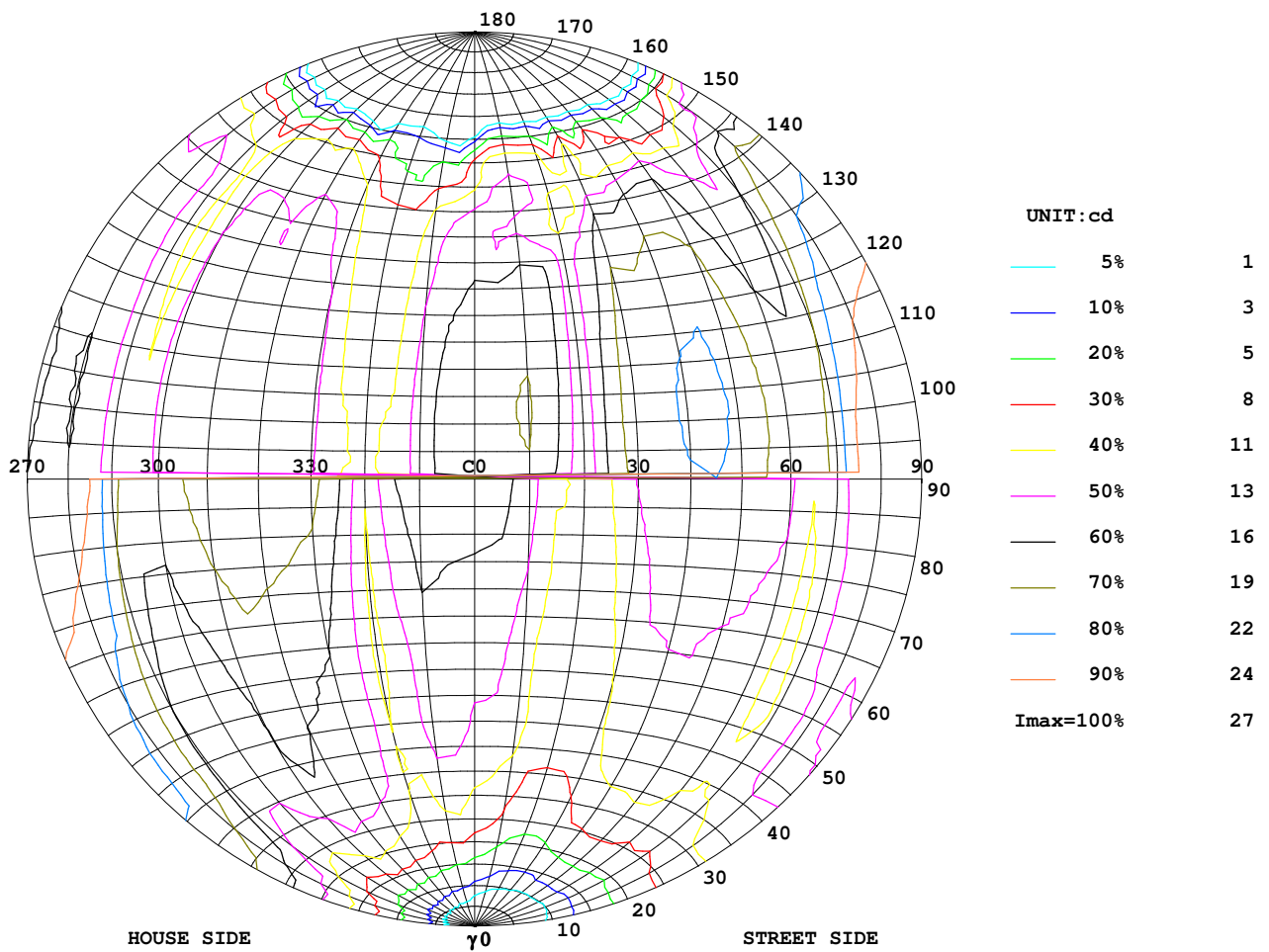
Test System: LSG-1800
 Temperature: 25.3 DEG
 Operators: A
 Test Date: 12-19-2018

Test Set: 5.0 deg/s C-Gamma (TYPE C)
 Humidity: 65.0%
 Test Distance: 10.000 m
 Remarks:

ISOCANDELA DIAGRAM

Report number:

MANUFACTURER: IDEAL LUX SRL	Address:	
NAME: 204468 LAMPADINA VINTAGE E27	TYPE: LIGHTBULP	WEIGHT:
SPECIFICATION:	DIMENSION: D120	SERIAL No.:



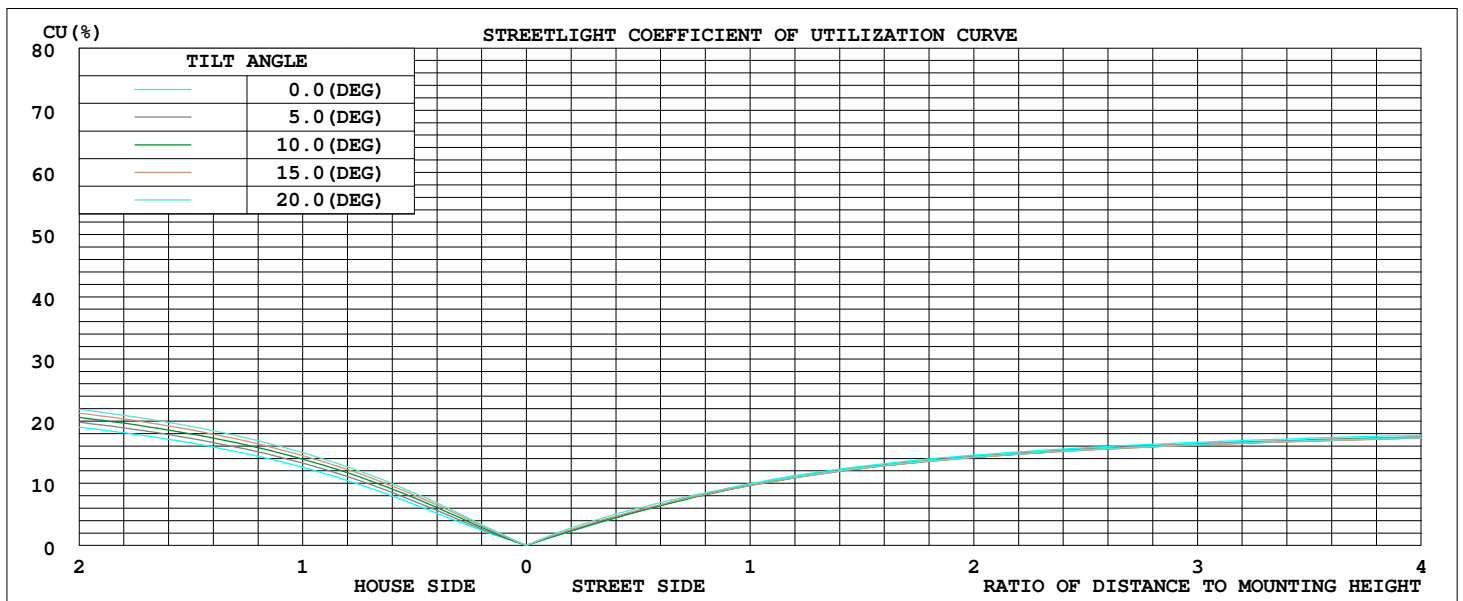
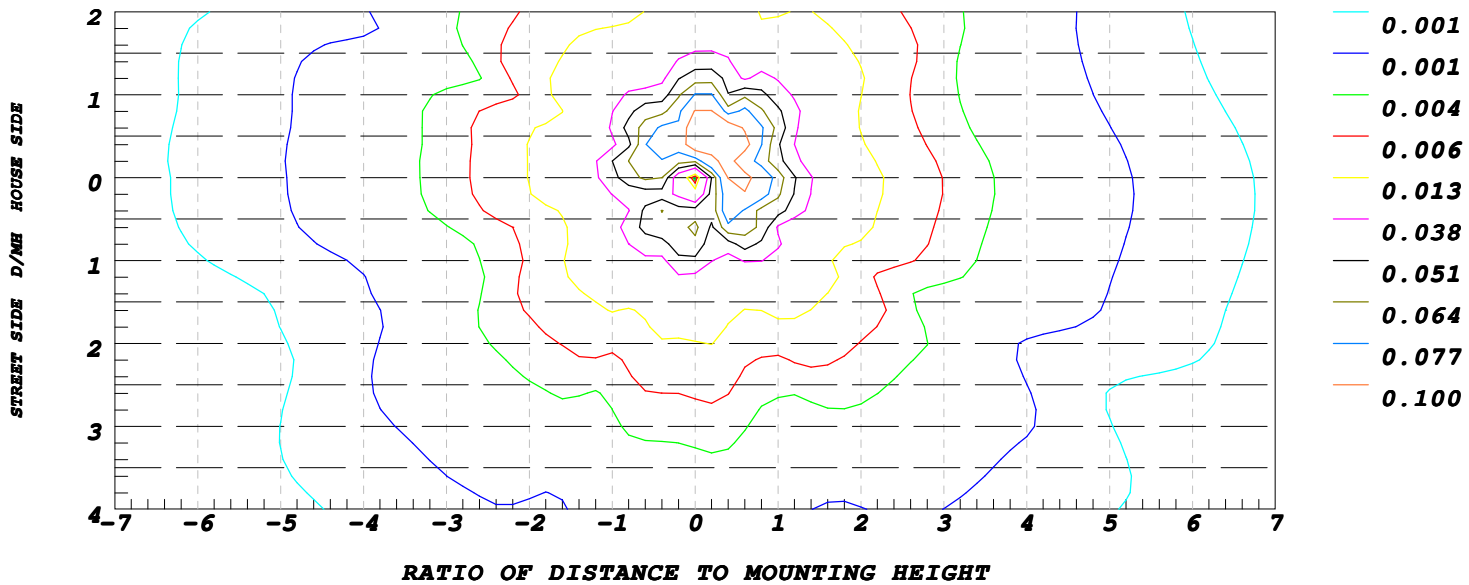
Test System: LSG-1800
 Temperature: 25.3 DEG
 Operators: A
 Test Date: 12-19-2018

Test Set: 5.0 deg/s C-Gamma (TYPE C)
 Humidity: 65.0%
 Test Distance: 10.000 m
 Remarks:

ISOLUX DIAGRAM

Report number:

MANUFACTURER: IDEAL LUX SRL	Address:	
NAME: 204468 LAMPADINA VINTAGE E27	TYPE: LIGHTBULP	WEIGHT:
SPECIFICATION:	DIMENSION: D120	SERIAL No.:

ILLUMINANCE AT MH=10 m, Enadir = 0.00 lx


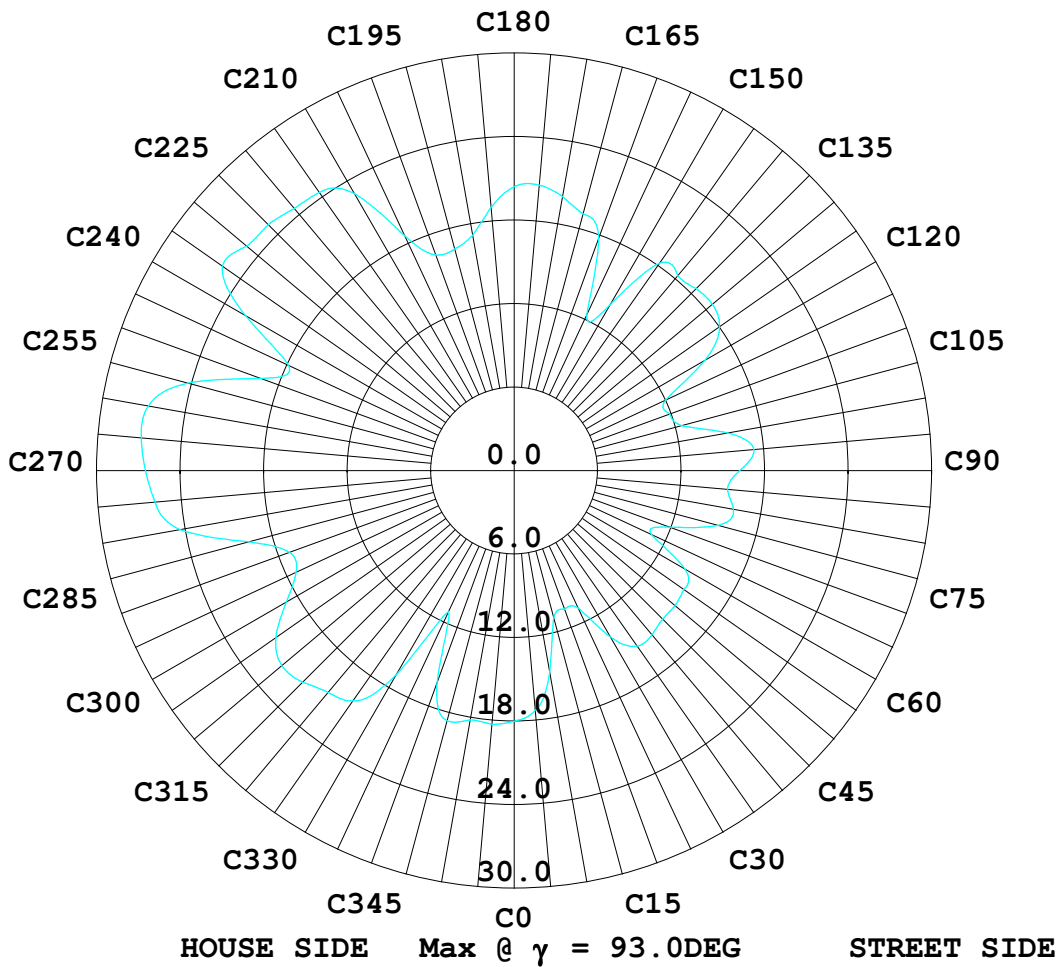
Test System: LSG-1800
Temperature: 25.3 DEG
Operators: A
Test Date: 12-19-2018

Test Set: 5.0deg/s C-Gamma (TYPE C)
Humidity: 65.0%
Test Distance: 10.000 m
Remarks:

ISOCANDELA DIAGRAM

Report number:

MANUFACTURER: IDEAL LUX SRL	Address:	
NAME: 204468 LAMPADINA VINTAGE E27	TYPE: LIGHTBULP	WEIGHT:
SPECIFICATION:	DIMENSION: D120	SERIAL No.:



Test System: LSG-1800
 Temperature: 25.3DEG
 Operators: A
 Test Date: 12-19-2018

Test Set: 5.0deg/s C-Gamma (TYPE C)
 Humidity: 65.0%
 Test Distance: 10.000 m
 Remarks:

LUMINOUS DISTRIBUTION INTENSITY DATA
Report number:

MANUFACTURER: IDEAL LUX SRL	Address:	
NAME: 204468 LAMPADINA VINTAGE E27	TYPE: LIGHTBULP	WEIGHT:
SPECIFICATION:	DIMENSION: D120	SERIAL No.:

UNIT: cd

C (DEG) \ γ (DEG)	0	5	10	15	20	25	30	35	40	45	50	55	60	65	70
0.0	0.00	0.00	0.00	0.00	0.00	0.00	0.00	0.00	0.00	0.00	0.00	0.00	0.00	0.00	0.00
5.0	0.40	0.30	0.20	0.00	0.00	0.00	0.00	0.00	0.00	0.00	0.00	0.00	0.00	0.00	0.00
10.0	2.30	2.10	1.80	1.60	1.50	1.40	1.40	1.30	1.30	1.30	1.40	1.40	1.40	1.30	1.40
15.0	4.50	4.20	3.70	3.10	3.00	2.90	2.90	3.10	3.30	3.40	3.60	3.70	3.60	3.50	3.50
20.0	7.30	6.70	5.90	4.90	4.60	4.70	4.90	5.50	5.80	6.10	6.10	6.10	5.90	6.00	5.80
25.0	9.30	8.80	7.70	6.30	5.90	6.10	6.50	7.60	7.90	8.29	8.40	8.20	7.60	7.90	7.50
30.0	10.4	9.90	8.80	7.10	6.90	7.10	7.70	9.09	9.50	9.90	9.90	9.80	9.20	9.50	9.20
35.0	11.5	11.0	10.0	8.00	7.80	7.80	8.80	10.3	10.9	11.0	11.2	11.3	10.3	10.3	10.0
40.0	12.4	12.4	11.2	9.00	8.50	8.60	9.60	11.4	12.3	12.1	12.1	12.5	11.3	10.7	10.9
45.0	13.2	13.2	11.9	9.40	9.20	9.70	10.3	12.3	13.4	13.0	12.9	13.2	12.3	11.1	11.5
50.0	13.7	13.4	11.9	9.30	9.09	9.60	10.5	12.5	13.3	13.0	12.8	13.0	12.4	10.5	11.1
55.0	14.2	13.7	11.9	9.30	9.09	9.50	10.8	12.6	13.3	13.2	12.7	12.9	12.3	10.2	11.0
60.0	14.5	14.2	12.2	9.40	9.30	9.60	11.2	13.0	13.4	13.5	13.0	13.0	12.4	10.2	11.2
65.0	15.0	14.5	12.7	9.80	9.60	9.80	11.5	13.5	13.7	13.7	13.4	13.3	12.7	10.2	11.4
70.0	15.5	15.0	13.0	10.1	9.80	9.90	12.0	13.9	14.0	13.9	13.7	13.4	13.0	10.2	11.5
75.0	16.0	15.6	13.5	10.4	10.0	10.0	12.3	14.2	14.2	14.0	14.2	13.6	13.2	10.3	11.5
80.0	16.6	16.3	13.9	10.5	10.2	10.2	12.8	14.5	14.5	14.3	14.4	14.0	13.4	10.5	11.7
85.0	17.2	16.7	14.3	10.9	10.4	10.5	13.2	14.9	14.9	14.5	14.7	14.4	13.7	10.7	11.8
90.0	17.7	17.2	14.5	10.9	10.5	10.7	13.6	15.2	15.2	15.0	15.0	14.8	14.0	10.9	11.9
95.0	18.0	17.4	14.7	11.0	10.5	10.9	13.9	15.4	15.5	15.2	15.2	15.0	14.3	10.9	12.0
100.0	18.1	17.4	14.7	11.0	10.4	10.9	14.0	15.4	15.6	15.2	15.2	15.0	14.4	10.8	12.0
105.0	18.0	17.2	14.5	10.8	10.3	10.8	13.9	15.4	15.7	15.2	15.0	15.0	14.5	10.8	12.1
110.0	17.9	17.0	14.2	10.5	10.2	10.7	13.9	15.2	15.6	15.0	14.9	14.8	14.5	10.7	12.0
115.0	17.4	16.5	13.9	10.3	10.1	10.5	13.7	15.0	15.5	14.8	14.7	14.5	14.4	10.5	12.0
120.0	16.9	16.0	13.5	10.1	9.90	10.3	13.6	14.9	15.2	14.3	14.4	14.3	14.0	10.3	11.9
125.0	16.4	15.4	13.0	9.80	9.60	10.0	13.3	14.5	15.0	13.9	14.1	14.2	13.7	10.1	11.9
130.0	15.8	14.8	12.6	9.40	9.30	9.60	12.8	14.2	14.7	13.5	13.9	14.1	13.5	9.90	11.8
135.0	15.0	14.2	12.1	9.00	9.09	9.20	12.4	13.9	14.5	13.4	13.7	14.0	13.2	10.1	12.1
140.0	13.6	12.9	10.9	8.10	8.29	8.50	11.7	13.0	13.7	12.8	13.2	13.3	13.0	10.4	12.1
145.0	10.5	8.70	7.60	5.70	6.30	7.00	10.3	12.0	12.5	11.8	12.2	12.2	12.4	9.80	11.0
150.0	8.80	5.00	5.40	4.70	4.90	5.30	7.80	9.00	11.1	10.3	11.2	10.5	9.50	7.30	8.70
155.0	2.00	0.30	0.70	1.80	2.50	3.00	3.10	1.30	3.20	4.00	5.50	3.40	4.10	2.50	3.80
160.0	0.00	0.00	0.00	0.00	0.00	0.00	0.00	0.00	0.00	0.00	0.00	0.00	0.00	0.00	0.00
165.0	0.00	0.00	0.00	0.00	0.00	0.00	0.00	0.00	0.00	0.00	0.00	0.00	0.00	0.00	0.00
170.0	0.00	0.00	0.00	0.00	0.00	0.00	0.00	0.00	0.00	0.00	0.00	0.00	0.00	0.00	0.00
175.0	0.00	0.00	0.00	0.00	0.00	0.00	0.00	0.00	0.00	0.00	0.00	0.00	0.00	0.00	0.00
180.0	0.00	0.00	0.00	0.00	0.00	0.00	0.00	0.00	0.00	0.00	0.00	0.00	0.00	0.00	0.00

Test System: LSG-1800
Temperature: 25.3DEG
Operators: A
Test Date: 12-19-2018
Test Set: 5.0deg/s C-Gamma (TYPE C)
Humidity: 65.0%
Test Distance: 10.000 m
Remarks:

LUMINOUS DISTRIBUTION INTENSITY DATA
Report number:

MANUFACTURER: IDEAL LUX SRL	Address:	
NAME: 204468 LAMPADINA VINTAGE E27	TYPE: LIGHTBULP	WEIGHT:
SPECIFICATION:	DIMENSION: D120	SERIAL No.:

UNIT: cd

C (DEG) \ γ (DEG)	75	80	85	90	95	100	105	110	115	120	125	130	135	140	145
0.0	0.00	0.10	0.00	0.00	0.00	0.00	0.00	0.00	0.00	0.00	0.00	0.00	0.00	0.00	0.00
5.0	0.00	0.10	0.10	0.10	0.10	0.20	0.10	0.10	0.20	0.20	0.50	0.60	0.70	0.70	1.00
10.0	1.40	1.50	1.50	1.60	1.70	1.70	1.50	1.70	2.00	2.20	2.60	2.80	3.10	3.10	3.70
15.0	3.70	3.70	3.70	3.70	3.80	3.50	3.30	3.50	3.90	4.40	5.20	5.30	5.90	6.00	6.50
20.0	6.00	6.30	6.40	6.30	6.50	6.00	5.40	5.10	5.50	6.50	7.60	7.90	8.60	8.90	9.00
25.0	7.90	8.29	8.50	8.50	8.50	7.60	6.80	6.90	7.40	8.80	10.4	10.7	11.5	11.8	11.3
30.0	9.90	10.3	10.4	10.4	10.3	9.09	7.80	7.90	8.50	10.7	12.4	12.9	13.5	13.9	13.2
35.0	10.9	11.7	11.8	11.7	11.7	9.80	8.40	8.70	9.30	11.9	13.9	14.1	15.0	15.2	14.8
40.0	12.3	13.0	13.0	13.0	12.6	10.9	9.30	9.60	10.0	12.8	15.0	15.2	15.9	16.4	16.0
45.0	13.0	14.2	13.9	13.6	13.3	11.5	10.3	10.3	10.7	13.5	15.8	16.3	16.5	17.0	16.6
50.0	12.9	14.2	13.7	13.4	13.9	12.4	10.7	10.3	10.7	13.6	16.0	16.5	16.5	17.0	17.0
55.0	12.8	14.2	13.3	13.4	14.2	12.7	10.5	10.1	10.3	13.6	15.8	16.5	16.5	16.7	16.9
60.0	13.3	14.3	13.3	13.7	14.5	13.0	10.3	10.0	10.3	13.7	15.7	16.5	16.5	16.7	16.9
65.0	13.9	14.2	13.6	14.3	15.0	13.3	10.5	10.2	10.5	13.9	15.9	16.6	16.6	16.9	17.0
70.0	14.1	14.4	14.1	14.8	15.7	13.7	10.9	10.3	10.8	14.2	16.2	16.9	16.9	17.2	17.2
75.0	14.2	14.7	14.5	15.2	16.2	14.0	11.2	10.7	11.1	14.5	16.5	17.1	17.2	17.4	17.5
80.0	14.4	15.0	14.8	15.6	16.5	14.4	11.5	11.0	11.3	14.9	17.0	17.5	17.5	17.6	17.6
85.0	14.7	15.4	15.0	15.9	17.0	14.8	11.9	11.4	11.5	15.2	17.4	17.9	17.9	17.8	17.8
90.0	15.0	15.9	15.2	16.1	17.2	15.2	12.3	11.7	11.8	15.6	17.8	18.2	18.2	18.0	18.0
95.0	15.2	16.2	15.5	16.3	17.4	15.8	12.6	11.9	12.1	15.9	18.1	18.7	18.7	18.4	18.2
100.0	15.4	16.2	15.6	16.4	17.2	16.0	12.8	12.2	12.3	16.2	18.4	19.2	18.9	18.7	18.2
105.0	15.2	16.3	15.8	16.4	17.2	16.0	12.8	12.2	12.3	16.4	18.5	19.4	19.1	18.7	18.4
110.0	15.2	16.2	15.8	16.3	16.9	15.9	12.7	12.1	12.3	16.4	18.5	19.5	19.1	18.7	18.4
115.0	15.0	16.0	15.5	16.0	16.5	15.7	12.5	12.0	12.1	16.4	18.2	19.6	19.0	18.5	18.2
120.0	14.7	15.6	15.2	15.5	16.0	15.2	12.1	11.7	11.8	16.2	18.0	19.4	18.7	18.1	18.0
125.0	14.3	15.2	14.7	15.0	15.6	14.5	11.5	11.2	11.3	16.0	17.8	18.9	18.0	18.0	17.8
130.0	14.0	14.8	14.3	14.5	15.0	13.9	11.0	10.5	10.7	15.6	17.1	18.0	17.1	17.8	17.2
135.0	14.1	14.7	13.7	14.0	14.4	13.0	10.3	9.80	9.80	14.9	16.1	17.1	16.1	17.2	16.6
140.0	13.7	14.3	13.2	13.5	13.5	12.2	9.40	8.90	8.90	13.7	14.8	15.9	14.9	16.3	15.9
145.0	12.1	12.9	11.9	12.3	11.8	10.8	8.20	7.90	7.80	12.4	12.2	13.6	13.5	15.2	14.8
150.0	9.40	10.1	9.90	10.0	9.40	8.90	6.80	6.40	5.70	8.00	6.60	7.10	9.09	11.7	13.2
155.0	4.10	4.90	4.40	5.60	4.10	4.30	3.30	3.20	2.10	2.50	0.30	0.50	1.80	3.80	4.10
160.0	0.00	0.00	0.00	0.00	0.00	0.00	0.00	0.00	0.00	0.00	0.00	0.00	0.00	0.00	0.00
165.0	0.00	0.00	0.00	0.00	0.00	0.00	0.00	0.00	0.00	0.00	0.00	0.00	0.00	0.00	0.00
170.0	0.00	0.00	0.00	0.00	0.00	0.00	0.00	0.00	0.00	0.00	0.00	0.00	0.00	0.00	0.00
175.0	0.00	0.00	0.00	0.00	0.00	0.00	0.00	0.00	0.00	0.00	0.00	0.00	0.00	0.00	0.00
180.0	0.00	0.00	0.00	0.00	0.00	0.00	0.00	0.00	0.00	0.00	0.00	0.00	0.00	0.00	0.00

Test System: LSG-1800
Temperature: 25.3 DEG
Operators: A
Test Date: 12-19-2018
Test Set: 5.0 deg/s C-Gamma (TYPE C)
Humidity: 65.0%
Test Distance: 10.000 m
Remarks:

LUMINOUS DISTRIBUTION INTENSITY DATA

Report number:

MANUFACTURER: IDEAL LUX SRL	Address:	
NAME: 204468 LAMPADINA VINTAGE E27	TYPE: LIGHTBULP	WEIGHT:
SPECIFICATION:	DIMENSION: D120	SERIAL No.:

UNIT: cd

C (DEG) \ γ (DEG)	150	155	160	165	170	175	180	185	190	195	200	205	210	215	220
0.0	0.00	0.00	0.00	0.00	0.00	0.00	0.00	0.00	0.00	0.00	0.00	0.00	0.00	0.00	0.00
5.0	0.90	1.20	1.10	1.40	1.30	1.70	1.50	1.30	1.60	1.30	1.80	1.60	2.10	1.90	2.30
10.0	3.60	3.90	4.00	4.50	4.30	4.80	4.70	4.40	4.70	4.30	4.90	5.00	5.80	5.60	6.10
15.0	6.60	7.00	7.10	7.70	7.70	8.20	7.90	7.30	7.70	7.20	7.80	8.20	9.80	9.70	10.4
20.0	8.90	10.1	10.4	11.2	11.1	11.7	11.4	10.3	10.4	10.0	10.5	11.4	13.7	13.7	14.7
25.0	10.4	12.5	13.2	13.9	14.0	14.5	14.3	12.6	12.5	12.2	12.8	13.7	16.4	16.7	17.7
30.0	11.2	13.9	15.0	15.9	16.0	16.6	16.5	14.5	13.7	13.5	14.0	15.4	18.0	18.7	19.9
35.0	11.9	15.0	16.9	17.6	17.7	18.4	18.1	15.9	15.0	14.7	15.0	16.6	19.6	20.4	21.1
40.0	12.4	15.7	17.9	18.6	18.7	19.3	19.3	16.7	15.8	15.4	15.8	17.4	20.6	21.4	22.0
45.0	12.6	15.7	18.6	19.1	19.4	20.1	20.0	17.2	16.2	16.0	16.2	18.0	21.1	22.1	22.6
50.0	12.5	15.2	18.5	19.0	19.6	20.1	19.9	17.5	16.3	15.9	16.2	18.0	21.2	22.3	22.9
55.0	12.3	14.7	18.1	18.9	19.4	19.7	19.7	17.7	16.2	15.7	16.2	18.0	21.4	22.6	23.1
60.0	12.1	14.0	18.0	18.7	19.1	19.6	19.7	17.8	16.2	15.7	16.1	18.0	21.6	22.7	23.4
65.0	12.1	13.6	17.9	18.7	19.1	19.7	19.7	18.0	16.3	15.7	16.2	18.0	21.7	23.1	23.7
70.0	12.2	13.2	17.9	18.9	19.3	19.9	19.9	18.0	16.5	15.8	16.2	18.1	22.1	23.4	23.8
75.0	12.5	12.9	17.9	18.7	19.3	20.0	20.0	18.4	16.5	15.9	16.3	18.2	22.4	23.6	24.0
80.0	12.7	12.7	17.9	19.0	19.6	20.2	20.1	18.6	16.6	16.0	16.3	18.4	22.6	23.9	24.2
85.0	13.0	12.5	17.9	19.0	19.7	20.4	20.2	18.7	16.9	16.2	16.3	18.4	22.7	24.2	24.4
90.0	13.5	12.5	17.9	19.1	19.9	20.5	20.4	18.9	17.1	16.4	16.5	18.6	23.0	24.4	24.6
95.0	13.7	12.4	17.8	19.2	20.0	20.7	20.5	19.1	17.2	16.5	16.5	18.7	23.0	24.5	24.6
100.0	14.2	12.3	17.6	19.1	20.0	20.7	20.5	19.1	17.2	16.5	16.5	18.7	23.0	24.4	24.6
105.0	14.5	12.3	17.4	19.0	19.9	20.5	20.4	19.0	17.2	16.4	16.5	18.6	22.7	24.4	24.5
110.0	14.7	12.3	17.1	18.7	19.5	20.2	20.2	18.7	16.9	16.2	16.2	18.2	22.2	24.0	24.0
115.0	15.0	12.5	16.6	18.2	19.1	19.6	19.7	18.1	16.4	15.8	15.8	17.8	21.5	23.4	23.5
120.0	15.2	12.7	16.3	17.9	18.7	18.9	19.3	17.7	15.9	15.4	15.2	17.2	20.7	22.7	22.7
125.0	15.2	12.7	16.2	17.5	18.4	18.2	18.7	17.0	15.4	14.9	14.5	16.5	19.9	21.9	21.7
130.0	15.2	12.6	16.0	17.0	17.9	17.6	18.0	16.2	14.5	14.3	14.0	15.7	19.1	20.9	20.9
135.0	15.0	12.5	15.5	16.9	17.2	17.0	17.2	15.6	13.6	13.6	13.3	14.9	18.0	19.9	19.9
140.0	14.5	12.1	14.7	16.5	16.5	16.2	16.5	15.0	12.8	12.9	12.5	14.2	17.0	18.7	18.7
145.0	13.9	11.7	13.7	15.2	15.7	14.9	15.4	14.3	11.8	12.1	11.7	13.4	13.7	15.0	14.7
150.0	13.2	11.5	13.0	13.9	14.4	13.6	14.2	13.5	10.5	10.8	9.20	11.1	11.5	14.1	15.2
155.0	5.70	4.70	6.20	6.80	7.80	6.80	7.40	7.90	5.70	6.00	4.50	6.50	7.60	9.09	8.70
160.0	0.00	0.00	0.00	0.00	0.00	0.00	0.00	0.00	0.00	0.00	0.00	0.00	0.00	0.00	0.00
165.0	0.00	0.00	0.00	0.00	0.00	0.00	0.00	0.00	0.00	0.00	0.00	0.00	0.00	0.00	0.00
170.0	0.00	0.00	0.00	0.00	0.00	0.00	0.00	0.00	0.00	0.00	0.00	0.00	0.00	0.00	0.00
175.0	0.00	0.00	0.00	0.00	0.00	0.00	0.00	0.00	0.00	0.00	0.00	0.00	0.00	0.00	0.00
180.0	0.00	0.00	0.00	0.00	0.00	0.00	0.00	0.00	0.00	0.00	0.00	0.00	0.00	0.00	0.00

Test System: LSG-1800
Temperature: 25.3DEG
Operators: A
Test Date: 12-19-2018

Test Set: 5.0deg/s C-Gamma (TYPE C)
Humidity: 65.0%
Test Distance: 10.000 m
Remarks:

LUMINOUS DISTRIBUTION INTENSITY DATA

Report number:

MANUFACTURER: IDEAL LUX SRL	Address:	
NAME: 204468 LAMPADINA VINTAGE E27	TYPE:LIGHTBULP	WEIGHT:
SPECIFICATION:	DIMENSION: D120	SERIAL No.:

UNIT: cd

C (DEG) \ γ (DEG)	225	230	235	240	245	250	255	260	265	270	275	280	285	290	295
0.0	0.00	0.00	0.00	0.00	0.00	0.00	0.00	0.10	0.00	0.00	0.00	0.00	0.00	0.00	0.00
5.0	2.00	2.50	2.10	2.50	2.10	2.40	2.10	2.60	2.10	2.40	2.00	2.20	1.70	1.90	1.60
10.0	5.80	6.40	6.00	6.50	6.00	6.40	6.00	6.40	5.90	6.20	5.60	5.80	4.90	4.70	4.30
15.0	9.90	10.5	10.1	10.5	10.1	10.3	10.0	10.4	9.80	10.1	9.30	9.09	7.70	7.40	6.90
20.0	14.4	14.8	14.3	14.2	12.3	13.2	14.0	14.5	13.6	13.7	12.8	12.5	10.7	9.80	9.40
25.0	17.2	18.0	17.5	17.1	13.7	15.5	17.2	17.7	16.7	16.5	15.5	15.0	12.7	11.5	11.2
30.0	19.6	20.2	19.9	19.1	14.5	16.7	19.5	19.9	19.2	18.7	17.5	16.5	13.9	12.6	12.3
35.0	21.1	21.6	21.2	20.2	15.0	17.6	20.9	21.1	20.4	20.2	18.9	17.8	14.7	13.6	13.5
40.0	21.9	22.4	22.3	20.9	15.2	17.9	21.7	22.1	21.5	21.4	19.7	18.6	15.2	14.2	14.1
45.0	22.5	22.9	22.7	21.2	15.5	18.0	22.1	22.5	22.0	22.0	20.2	18.9	15.7	14.3	14.3
50.0	22.7	23.1	23.0	21.1	15.2	18.0	22.3	23.0	22.5	22.2	20.7	19.3	15.9	14.3	14.3
55.0	23.1	23.2	23.2	21.1	15.2	18.0	22.5	23.1	22.9	22.6	21.1	19.6	16.2	14.5	14.4
60.0	23.2	23.6	23.6	21.1	15.2	18.0	22.7	23.7	23.2	23.0	21.7	20.2	16.6	14.9	14.8
65.0	23.6	23.9	23.9	21.2	15.4	18.0	23.1	24.2	24.0	23.6	22.5	21.0	17.4	15.2	15.2
70.0	24.0	24.1	24.2	21.5	15.7	18.1	23.4	24.6	24.6	24.2	23.1	21.9	17.9	15.7	15.6
75.0	24.2	24.4	24.6	21.6	16.1	18.4	23.6	25.2	25.2	24.9	24.1	22.7	18.4	16.1	16.0
80.0	24.5	24.6	24.9	21.7	16.5	18.6	23.9	25.7	25.9	25.5	24.7	23.4	18.9	16.4	16.4
85.0	24.7	24.7	25.0	22.0	17.1	18.7	24.0	26.1	26.4	26.1	25.4	24.0	19.4	16.7	16.9
90.0	24.9	25.0	25.4	22.2	17.6	19.2	24.2	26.6	26.8	26.4	25.7	24.2	19.6	17.1	17.2
95.0	25.0	25.2	25.7	22.3	18.0	19.5	24.2	26.6	26.9	26.4	25.9	24.4	19.6	17.2	17.4
100.0	25.0	25.2	25.7	22.4	18.4	19.6	24.2	26.6	26.8	26.3	25.7	24.1	19.6	17.2	17.5
105.0	25.0	25.0	25.7	22.2	18.7	19.7	23.9	26.1	26.4	25.9	25.2	23.5	19.3	17.0	17.2
110.0	24.6	24.6	25.2	21.7	18.7	19.6	23.5	25.6	25.7	25.2	24.6	22.9	19.0	16.5	17.0
115.0	24.1	24.0	24.6	21.1	18.7	19.5	22.7	24.6	25.0	24.5	23.8	22.1	18.5	16.2	16.6
120.0	23.2	23.1	23.9	20.5	18.6	19.1	22.0	23.7	24.0	23.5	23.0	21.2	18.0	15.5	16.2
125.0	22.5	22.3	23.1	19.7	18.4	18.6	21.2	22.7	23.1	22.5	22.2	20.4	17.4	14.9	15.5
130.0	21.5	21.2	22.2	19.0	18.0	18.0	20.6	21.7	22.2	21.6	21.4	19.6	16.9	14.4	15.0
135.0	20.6	20.2	21.1	18.1	17.7	17.5	19.7	20.7	21.1	20.5	20.6	18.7	16.3	13.7	14.5
140.0	18.4	17.1	16.9	14.4	15.0	14.9	16.5	17.4	19.4	19.3	19.6	17.6	15.2	13.0	13.6
145.0	14.9	15.4	17.0	14.1	14.9	13.9	14.7	14.7	14.9	15.4	16.0	14.4	13.2	11.5	12.1
150.0	16.9	16.5	16.5	10.5	11.4	10.3	11.3	13.7	15.0	14.5	14.1	11.3	9.70	7.20	7.50
155.0	9.50	8.90	6.80	2.60	3.40	3.00	3.60	4.20	8.00	7.30	7.60	5.50	5.30	4.20	4.40
160.0	0.30	0.00	0.00	0.00	0.00	0.00	0.00	0.00	0.00	0.00	0.00	0.00	0.00	0.00	0.00
165.0	0.00	0.00	0.00	0.00	0.00	0.00	0.00	0.00	0.00	0.00	0.00	0.00	0.00	0.00	0.00
170.0	0.00	0.00	0.00	0.00	0.00	0.00	0.00	0.00	0.00	0.00	0.00	0.00	0.00	0.00	0.00
175.0	0.00	0.00	0.00	0.00	0.00	0.00	0.00	0.00	0.00	0.00	0.00	0.00	0.00	0.00	0.00
180.0	0.00	0.00	0.00	0.00	0.00	0.00	0.00	0.00	0.00	0.00	0.00	0.00	0.00	0.00	0.00

Test System:LSG-1800
Temperature:25.3DEG
Operators:A
Test Date:12-19-2018

Test Set: 5.0deg/s C-Gamma (TYPE C)
Humidity:65.0%
Test Distance:10.000 m
Remarks:

LUMINOUS DISTRIBUTION INTENSITY DATA
Report number:

MANUFACTURER: IDEAL LUX SRL	Address:	
NAME: 204468 LAMPADINA VINTAGE E27	TYPE: LIGHTBULP	WEIGHT:
SPECIFICATION:	DIMENSION: D120	SERIAL No.:

UNIT: cd

C (DEG) \ γ (DEG)	300	305	310	315	320	325	330	335	340	345	350	355
0.0	0.00	0.00	0.00	0.00	0.00	0.00	0.00	0.00	0.00	0.00	0.00	0.00
5.0	1.60	1.50	1.60	1.30	1.40	1.20	1.30	1.00	1.00	0.90	0.80	0.70
10.0	4.60	4.30	4.60	4.10	4.10	3.60	3.70	3.30	3.20	2.90	2.80	2.50
15.0	7.20	7.10	7.80	7.20	7.30	6.60	6.60	6.00	5.90	5.40	5.30	4.80
20.0	9.90	10.3	11.2	10.5	10.3	9.60	9.40	8.60	8.00	8.10	8.20	7.70
25.0	11.7	12.2	13.3	12.7	12.4	11.5	11.0	9.70	9.00	10.1	10.4	9.80
30.0	13.2	13.7	14.7	14.3	14.2	13.4	12.8	10.5	10.1	11.8	11.7	11.1
35.0	14.4	14.9	15.7	15.0	14.9	14.2	13.5	10.8	10.8	12.9	12.9	12.2
40.0	15.0	15.7	16.5	15.6	15.7	15.0	13.9	10.7	11.5	13.9	13.9	13.0
45.0	15.2	16.1	17.0	16.1	15.8	15.5	14.3	10.7	12.1	14.7	14.5	13.7
50.0	15.2	16.2	17.2	16.4	16.1	15.6	14.2	10.4	12.3	14.8	14.5	13.9
55.0	15.5	16.5	17.5	16.9	16.3	15.9	14.3	10.2	12.4	15.0	14.7	14.2
60.0	15.8	17.1	18.0	17.4	16.7	16.2	14.4	10.1	12.7	15.2	15.0	14.7
65.0	16.3	17.6	18.6	18.0	17.5	16.7	14.5	10.2	13.3	15.8	15.5	15.2
70.0	16.9	18.1	19.2	18.7	18.1	17.4	15.0	10.3	13.7	16.2	15.8	15.5
75.0	17.2	18.7	19.7	19.3	18.7	18.0	15.4	10.4	14.2	16.5	16.2	16.1
80.0	17.9	19.5	20.4	20.0	19.4	18.7	15.8	10.5	14.8	17.2	16.6	16.7
85.0	18.4	20.1	21.0	20.7	20.0	19.3	16.2	10.8	15.2	17.7	17.2	17.5
90.0	18.7	20.6	21.5	21.1	20.5	19.9	16.5	11.1	15.9	18.4	17.9	18.0
95.0	19.0	21.0	21.9	21.6	20.9	20.4	17.0	11.3	16.4	18.7	18.2	18.4
100.0	19.1	21.1	22.0	21.7	21.0	20.7	17.1	11.4	16.6	19.0	18.5	18.5
105.0	19.0	21.1	22.0	21.7	21.0	20.7	16.9	11.5	16.9	19.0	18.5	18.5
110.0	18.7	20.9	21.9	21.6	20.7	20.6	16.6	11.5	17.0	18.7	18.0	18.1
115.0	18.2	20.6	21.6	21.1	20.4	20.4	16.4	11.8	17.0	18.6	17.8	17.8
120.0	17.7	20.1	21.0	20.7	19.7	19.9	15.8	12.0	17.0	18.1	17.4	17.2
125.0	17.1	19.4	20.2	20.0	19.1	19.3	15.2	12.2	16.9	17.7	16.6	15.9
130.0	16.5	18.7	19.3	19.3	18.2	18.5	14.5	12.4	15.9	15.7	13.7	13.9
135.0	15.5	18.0	18.4	18.2	17.2	17.5	13.3	10.9	13.0	13.6	13.2	13.7
140.0	14.2	16.7	17.0	16.7	15.0	14.8	9.90	10.3	12.6	14.0	14.2	14.2
145.0	12.4	14.7	13.2	12.0	10.7	11.3	11.1	11.5	13.5	13.9	13.4	12.9
150.0	7.10	9.09	8.20	8.90	8.50	11.9	8.10	11.4	12.5	12.8	12.1	10.7
155.0	4.30	5.90	6.30	7.30	4.10	7.20	3.60	5.40	5.60	6.10	5.50	4.60
160.0	0.00	0.00	0.00	0.00	0.00	0.00	0.00	0.00	0.00	0.00	0.00	0.00
165.0	0.00	0.00	0.00	0.00	0.00	0.00	0.00	0.00	0.00	0.00	0.00	0.00
170.0	0.00	0.00	0.00	0.00	0.00	0.00	0.00	0.00	0.00	0.00	0.00	0.00
175.0	0.00	0.00	0.00	0.00	0.00	0.00	0.00	0.00	0.00	0.00	0.00	0.00
180.0	0.00	0.00	0.00	0.00	0.00	0.00	0.00	0.00	0.00	0.00	0.00	0.00

Test System: LSG-1800
Temperature: 25.3DEG
Operators: A
Test Date: 12-19-2018
Test Set: 5.0deg/s C-Gamma (TYPE C)
Humidity: 65.0%
Test Distance: 10.000 m
Remarks: