

ideal lux.



Essence



A family of **integrated LED** luminaires with a tapered round or square profile, which plays on the interplay between a line of light and a point-like light source.

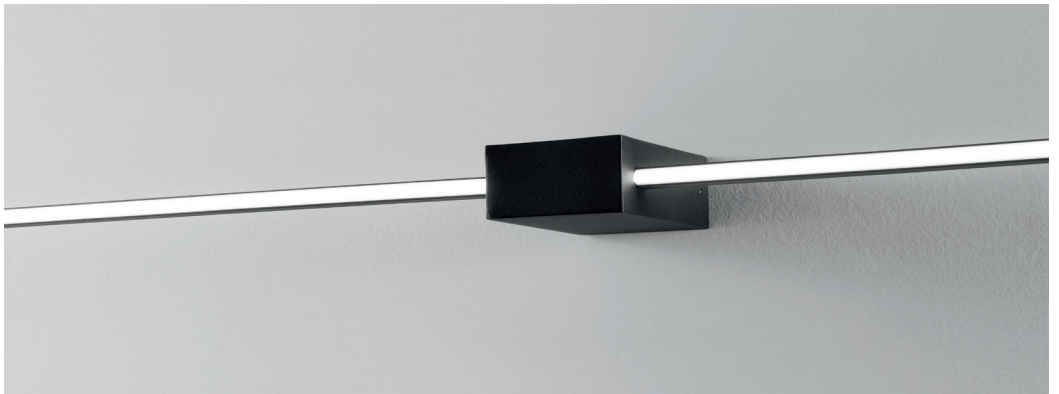
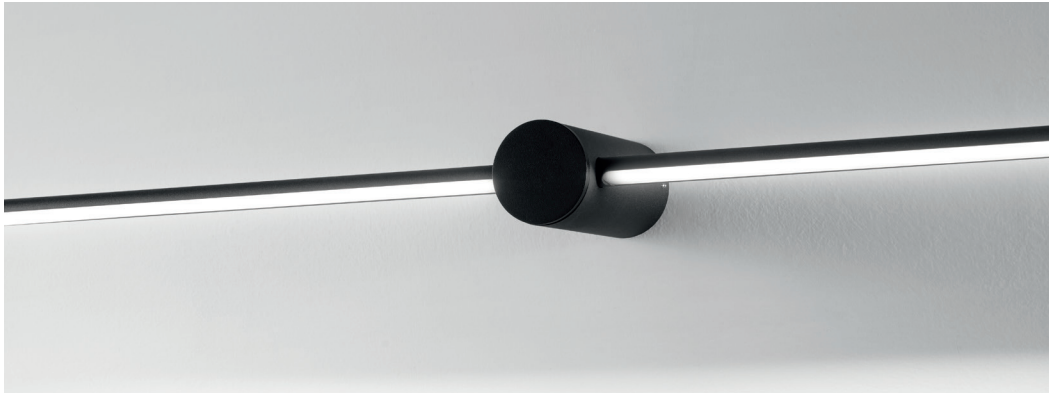
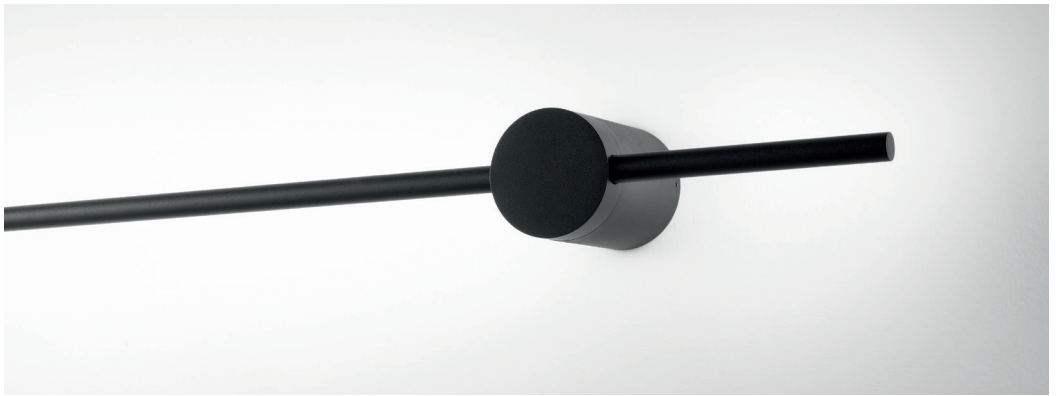


A complete range:

vertical and horizontal linear suspensions,
three wall-mounted models with different
lighting angles, a table lamp
and a floor lamp, to create a coordinated
design scheme **with a consistent aesthetic.**







Wall-mounted range with a fixed diffuser
for direct light, indirect light directed towards the wall,
or light angled at 45°, depending on the model.

Consistent, **contemporary finishes:**
white, black, brass, with a **body in**
painted or plated aluminium.



White



Black

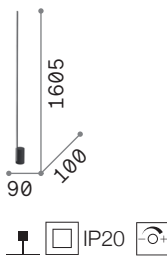
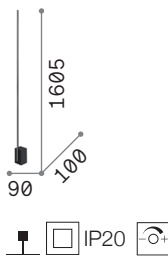
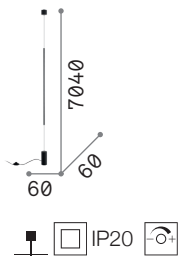
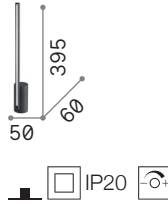
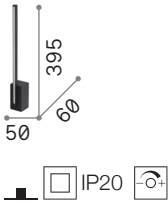
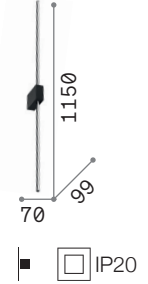
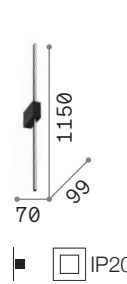
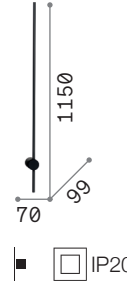
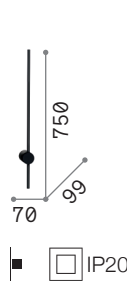
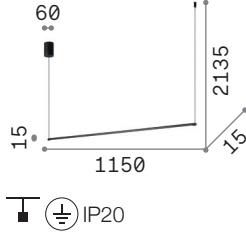
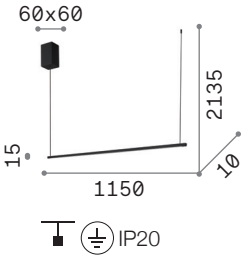


Brass

The diffuser, made of satin-finished opal polycarbonate, transforms the stem into a continuous line of light emitted from the side.



Dimensions



ideal lux®

www.ideal-lux.com