

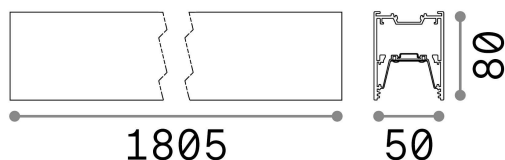
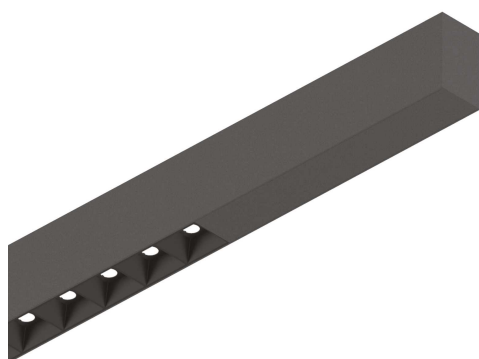
Allgemeine Information

Technisch - Systeme

Ean	8021696192420
Artikel	FLUO ACCENT 1800 4000K BK
Installation	Systeme
Garantie	5 years
Bruttogewicht	6.83 kg
Volumen	0.025675 m ³

Technische Information

Nettogewicht	3.86 kg
Isolationsklasse	I
Schutzindex	IP20
Einhaltung	CE
Betriebstemperatur	0° ~ +40 °C
Dimmer	NO, On-Off
Leistung	220-240 V AC 50/60 Hz
Energieversorgung	In-built, included Replaceable (by qualified operators only), electronic, tridonic
einschließlich Zubehör	Mounting kit (suspension, recessed, surface), Dimmable driver, Blinded corner, Structure connector



Quellinfo

Integrierte Quelle	Integrated LED module
Austauschbare Quelle	Replaceable (by qualified operators only)
Leistung	30 W
Emissionen	Direct
Maximaler Verbrauch	max 30,00 W
Merkmale LED	LED SMD OSRAM
CCT LED	4000 K
Dauer LED (t. 25°C)	50000 h
CRI	> 80
SDCM	3
Lichtstrahlwinkel	30°
UGR Maximal	< 13
Lichtstrahlfluss	2900 lm
Nützlicher Lichtstrom	2350 lm