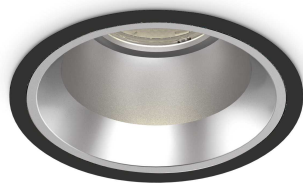


## Informations générales

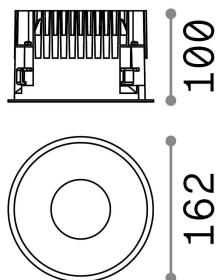
## Technique - Lampes à encastrer



|                     |                         |
|---------------------|-------------------------|
| <b>Ean</b>          | 8021696266572           |
| <b>Article</b>      | OFF FI 28W 3000K BK     |
| <b>Installation</b> | Lampes à encastrer      |
| <b>Garantie</b>     | 5 years                 |
| <b>Poids brut</b>   | 1.13 kg                 |
| <b>Le volume</b>    | 0.004468 m <sup>3</sup> |

## Info technique

|                                      |  |
|--------------------------------------|--|
| <b>Poids net</b>                     | 0.99 kg  |
| <b>Classe d'isolation</b>            | II   |
| <b>Indice de protection</b>          | IP20   |
| <b>Conformité</b>                    | CE   |
| <b>Température de fonctionnement</b> | 0° ~ +40 °C  |
| <b>Dimmer</b>                        | NO, On-Off   |
| <b>Puissance de sortie</b>           | 220-240 V AC 50/60 Hz  |
| <b>Source de courant</b>             | Separate, included<br>Replaceable (by qualified operators only),<br>electronic, tridonic |
| <b>Spécifications encastrées</b>     | Ø 150 - h. ≥ 150 , 1-25  |
| <b>Indice de protection avant</b>    | IP54   |
| <b>Accessoires non inclus</b>        | Dimmable driver, Black reflector   |



## Informations sur la source

|                                   |   |
|-----------------------------------|---|
| <b>Source intégrée</b>            | Integrated LED module                     |
| <b>Source remplaçable</b>         | Replaceable (by qualified operators only) |
| <b>la puissance</b>               | 28 W                                      |
| <b>Émissions</b>                  | Direct                                    |
| <b>Consommation maximale</b>      | max 28,00 W                               |
| <b>Caractéristiques LED</b>       | LED COB CITIZEN                           |
| <b>CCT LED</b>                    | 3000 K                                    |
| <b>Durée LED (t. 25°C)</b>        | 50000 h                                   |
| <b>CRI</b>                        | > 90                                      |
| <b>SDCM</b>                       | 3   |
| <b>Angle de faisceau lumineux</b> | 60°                                       |
| <b>UGR Maximum</b>                | < 19                                      |
| <b>Flux du faisceau lumineux</b>  | 2900 lm                                   |
| <b>Flux lumineux utile</b>        | 2385 lm                                   |