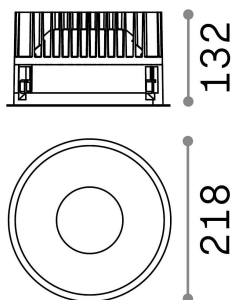
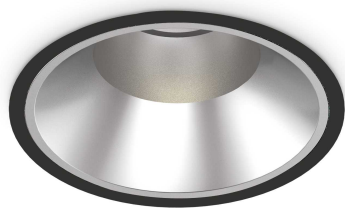


Informations générales

Technique - Lampes à encastrer



| | |
|---------------------|-------------------------|
| Ean | 8021696266596 |
| Article | OFF FI 42W 3000K BK |
| Installation | Lampes à encastrer |
| Garantie | 5 years |
| Poids brut | 2.08 kg |
| Le volume | 0.009396 m ³ |

Info technique

| | |
|--------------------------------------|--|
| Poids net | 1.85 kg |
| Classe d'isolation | II |
| Indice de protection | IP20 |
| Conformité | CE |
| Température de fonctionnement | 0° ~ +40 °C |
| Dimmer | NO, On-Off |
| Puissance de sortie | 220-240 V AC 50/60 Hz |
| Source de courant | Separate, included Replaceable (by qualified operators only), electronic, tridonic |
| Spécifications encastrées | Ø 205 - h. ≥ 180 , 1-25 |
| Indice de protection avant | IP54 |
| Accessoires non inclus | Dimmable driver, Black reflector |

Informations sur la source

| | |
|-----------------------------------|---|
| Source intégrée | Integrated LED module |
| Source remplaçable | Replaceable (by qualified operators only) |
| la puissance | 42 W |
| Émissions | Direct |
| Consommation maximale | max 42,00 W |
| Caractéristiques LED | LED COB CITIZEN |
| CCT LED | 3000 K |
| Durée LED (t. 25°C) | 50000 h |
| CRI | > 90 |
| SDCM | 3 |
| Angle de faisceau lumineux | 60° |
| UGR Maximum | < 19 |
| Flux du faisceau lumineux | 4150 lm |
| Flux lumineux utile | 3320 lm |