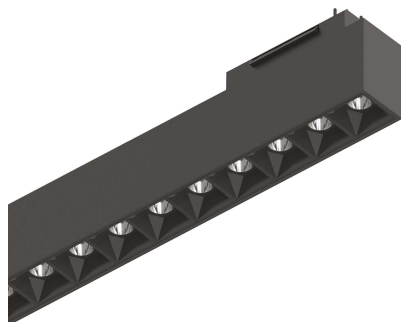


## Info generali

### Tecnico - Sistemi

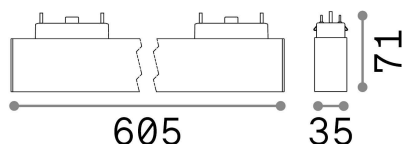
Indoor track mounted linear fitting with integrated LED sources and direct light emission

<b>Ean</b>	8021696223018
<b>Articolo</b>	ARCA ACCENT 29W 4000K BK
<b>Installazione</b>	Sistemi
<b>Garanzia</b>	5 years
<b>Peso lordo</b>	0.91 kg
<b>Volume</b>	0.008678 m <sup>3</sup>



## Info tecniche e installative

<b>Peso netto</b>	0.7 kg
<b>Classe di isolamento</b>	III
<b>Grado di protezione</b>	IP20
<b>Conformità</b>	CE
<b>Temperatura d'esercizio</b>	0° ~ +40 °C
<b>Dimmer</b>	NO, On-Off
<b>Alimentazione</b>	48 V DC
<b>Alimentatore</b>	Required, remoted, not included NO
<b>Accessori non inclusi</b>	Arca profile



## Info sorgente e prestazionali

<b>Sorgente integrata</b>	Integrated LED module
<b>Sorgente sostituibile</b>	Replaceable (by qualified operators only)
<b>Potenza</b>	29 W
<b>Emissione</b>	Direct
<b>Consumo massimo</b>	max 29,00 W
<b>Caratteristiche LED</b>	LED SMD OSRAM
<b>CCT LED</b>	4000 K
<b>Durata LED (t. 25°c)</b>	50000 h
<b>CRI</b>	> 80
<b>SDCM</b>	3
<b>Fascio luminoso</b>	35°
<b>UGR massimo</b>	< 13
<b>Flusso sorgente</b>	3950 lm
<b>Flusso utile</b>	2920 lm
<b>Rischio fotobiologico</b>	2