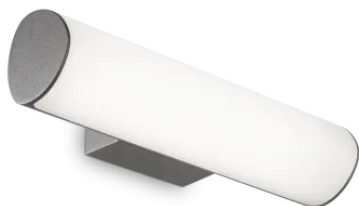


Info generali

Esterno - Applique

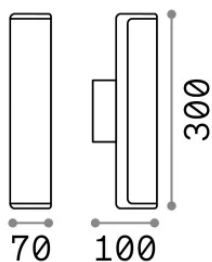
Outdoor wall mounted linear fitting with integrated LED sources and direct light emission



Ean	8021696246925
Articolo	ETERE AP ANTRACITE 3000K
Installazione	Applique
Garanzia	5 years
Peso lordo	0.7 kg
Volume	0.002684 m ³

Info tecniche e installative

Peso netto	0.59 kg
Classe di isolamento	I
Grado di protezione	IP44
Conformità	CE
Temperatura d'esercizio	-15° ~ +45 °C
Dimmer	Non-dimmable, On-Off
Alimentazione	220-240 V AC 50/60 Hz
Alimentatore	In-built, included Replaceable (by qualified operators only), electronic



Info sorgente e prestazionali

Sorgente integrata	Integrated LED module
Sorgente sostituibile	No
Potenza	9,5 W
Emissione	Direct
Consumo massimo	max 9,5 W
Caratteristiche LED	LED SMD
CCT LED	3000 K
Durata LED (t. 25°c)	25000 h
CRI	> 90
SDCM	3
Fascio luminoso	-
Flusso sorgente	1000 lm
Flusso utile	570 lm