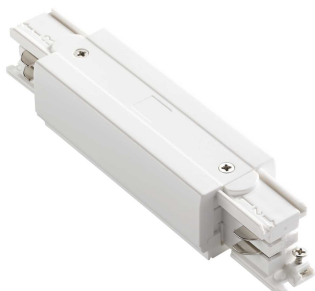


**Info generali****Tecnico - Accessorio**

Supply and connection kit for LINK TRIMLESS profiles



<b>Ean</b>	8021696227580
<b>Articolo</b>	LINK TRIMLESS MAIN CONNECTOR MIDDLE ON-OFF WH
<b>Installazione</b>	Accessorio
<b>Garanzia</b>	5 years
<b>Peso lordo</b>	0.13 kg
<b>Volume</b>	0.000365 m <sup>3</sup>

**Info tecniche e installative**

<b>Peso netto</b>	0.12 kg
<b>Conformità</b>	CE
<b>Efficienza a pieno carico</b>	X
<b>Tipo accessorio</b>	Required / 1 kit for each electrical input connection, max 210W
<b>Alimentazione</b>	120-240 V AC 50 Hz



98