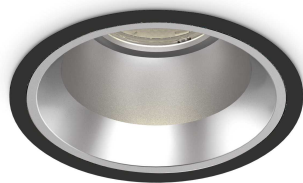


## Info generali

### Tecnico - Lampade da incasso

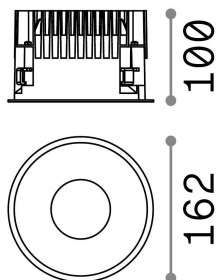
Indoor ceiling recessed projector with integrated LED sources, enhanced protection and direct light emission



<b>Ean</b>	8021696266572
<b>Articolo</b>	OFF FI 28W 3000K BK
<b>Installazione</b>	Lampade da incasso
<b>Garanzia</b>	5 years
<b>Peso lordo</b>	1.13 kg
<b>Volume</b>	0.004468 m <sup>3</sup>

## Info tecniche e installative

<b>Peso netto</b>	0.99 kg
<b>Classe di isolamento</b>	II
<b>Grado di protezione</b>	IP20
<b>Conformità</b>	CE
<b>Temperatura d'esercizio</b>	0° ~ +40 °C
<b>Dimmer</b>	NO, On-Off
<b>Alimentazione</b>	220-240 V AC 50/60 Hz
<b>Alimentatore</b>	Separate, included Replaceable (by qualified operators only), electronic, tridonic
<b>Specifiche per l'incasso</b>	Ø 150 - h. ≥ 150 , 1-25
<b>Protezione frontale</b>	IP54
<b>Accessori non inclusi</b>	Dimmable driver, Black reflector



## Info sorgente e prestazionali

<b>Sorgente integrata</b>	Integrated LED module
<b>Sorgente sostituibile</b>	Replaceable (by qualified operators only)
<b>Potenza</b>	28 W
<b>Emissione</b>	Direct
<b>Consumo massimo</b>	max 28,00 W
<b>Caratteristiche LED</b>	LED COB CITIZEN
<b>CCT LED</b>	3000 K
<b>Durata LED (t. 25°C)</b>	50000 h
<b>CRI</b>	> 90
<b>SDCM</b>	3
<b>Fascio luminoso</b>	60°
<b>UGR massimo</b>	< 19
<b>Flusso sorgente</b>	2900 lm
<b>Flusso utile</b>	2385 lm